



LONDON BOROUGH OF ENFIELD

**AGENDA FOR THE COUNCIL MEETING
TO BE HELD ON WEDNESDAY, 9TH
NOVEMBER, 2011 AT 7.00 PM**

**THE WORSHIPFUL THE MAYOR
AND COUNCILLORS OF THE
LONDON BOROUGH OF ENFIELD**

Please Reply to: James Kinsella
Phone: (020) 8379 4041
Fax: (020) 8379 3177
Textphone: (020) 8379 4419
E-mail: James.Kinsella@enfield.gov.uk
My Ref: DST/JK

Date: 1 November 2011

Dear Councillor,

You are summoned to attend the meeting of the Council of the London Borough of Enfield to be held at the Civic Centre, Silver Street, Enfield on Wednesday, 9th November, 2011 at 7.00 pm for the purpose of transacting the business set out below.

Yours sincerely

J.P.Austin

Assistant Director, Corporate Governance

- 1. ELECTION (IF REQUIRED) OF THE CHAIRMAN/DEPUTY CHAIRMAN OF THE MEETING**
- 2. MAYOR'S CHAPLAIN TO GIVE A BLESSING**

The Mayor's Chaplain to give a blessing.

- 3. MAYOR'S ANNOUNCEMENTS (IF ANY) IN CONNECTION WITH THE ORDINARY COUNCIL BUSINESS**

- 4. MINUTES (Pages 1 - 10)**

To approve, as a correct record, the minutes of the Council meeting held on 21 September 2011.

- 5. APOLOGIES**
- 6. DECLARATION OF INTERESTS (Pages 11 - 12)**

Members of the Council are invited to identify any personal or prejudicial

interests relevant to items on the agenda. Please refer to the guidance note attached to the agenda.

7. OPPOSITION BUSINESS - SUPPORTING THE FORMATION OF FREE SCHOOLS IN ENFIELD (Pages 13 - 16)

An issues paper prepared by the Opposition Group is attached for the consideration of Council.

The Constitution Procedure Rules relating to Opposition Business are attached for information.

8. IMPLEMENTING THE ENFIELD FOOD STRATEGY (Pages 17 - 32)

To receive a report from the Director of Regeneration, Leisure and Culture (No.102) seeking approval to the development of the Enfield Food Strategy 3 Year Action Plan.

The recommendations set out in the report were endorsed and recommended for approval to Council, at the Cabinet meeting held on 12 October 2011. **(Key Decision – Reference No.3346)**

9. THE ENFIELD DECLARATION ON BECOMING A "GLOBAL BOROUGH" (Pages 33 - 36)

To receive a report from the Director of Schools and Children's Services (No.104) seeking agreement to the Enfield Declaration on becoming a "Global Borough".

The recommendations set out in the report were endorsed and recommended for approval to Council, at the Cabinet meeting held on 12 October 2011. **(Non-Key Decision)**

10. REVIEW OF PARLIAMENTARY POLLING DISTRICTS & PLACES (Pages 37 - 48)

To receive a report from the Chief Executive (No.130) seeking approval to the final recommendations arising from the statutory review of Polling Districts and Polling Stations undertaken by the Electoral Review Panel in order to comply with the requirements of the Representation of the People Act 1983.

Council is being asked to approve the recommendations arising from the review for adoption with effect from 1 December 2011.

11. REVIEW OF PARLIAMENTARY CONSTITUENCY BOUNDARIES (Pages 49 - 54)

To receive a report from the Chief Executive (No.131) asking the Council to consider whether it wishes to submit the representations recommended by

the Electoral Review Panel on 11 October 2011 to the Boundary Commission for England, in response to their initial proposals for review of Parliamentary constituency boundaries.

12. CHANGES TO THE COUNCIL'S CONSTITUTION (Pages 55 - 60)

To receive a report from the Director of Finance, Resources & Customer Services (No.132) recommending a number of changes to the Council's Constitution, agreed following consideration by the Governance Review Group on 1 September & 17 October 2011.

13. COUNCILLORS' QUESTION TIME (TIME ALLOWED - 30 MINUTES)
(Pages 61 - 94)

13.1 Urgent Questions (Part 4 - Paragraph 9.2.(b) of Constitution – Page 4-9)

With the permission of the Mayor, questions on urgent issues may be tabled with the proviso of a subsequent written response if the issue requires research or is considered by the Mayor to be minor.

Please note that the Mayor will decide whether a question is urgent or not.

The definition of an urgent question is “An issue which could not reasonably have been foreseen or anticipated prior to the deadline for the submission of questions and which needs to be considered before the next meeting of the Council.”

Submission of urgent questions to Council requires the Member when submitting the question to specify why the issue could not have been reasonably foreseen prior to the deadline and why it has to be considered before the next meeting. A supplementary question is not permitted.

13.2 Councillors' Questions (Part 4 – Paragraph 9.2(a) of Constitution – Page 4 - 8)

The forty eight questions are attached to the agenda.

14. MOTIONS

14.1 In the name of Councillor Goddard

“Evidence of the sources of odour emanating from the different parts of the Deephams site have been provided to the Council and all Councillors by Thames Water. Council therefore reaffirms its objective to ensure that the odour from Deephams works is thoroughly addressed in the current and future development of the site.

Council will continue to make representations to Thames Water about the issue through the forthcoming consultation process and public meetings that Thames Water have to organise as part of the planning process.

To ensure that resident views are equally heard, Council will work with Thames Water to get maximum public participation at these events and in the consultation processes.”

14.2 In the name of Councillor Taylor

“This Council notes the Secretary of States decision on Chase Farm Hospital and agrees a course of action.”

14.3 In the name of Councillor Hamilton

“This Council deplores the decrease in sergeant numbers in Safer Neighbourhood teams in Enfield as a result of a decision taken by the Conservative lead Metropolitan Police Authority (MPA). This at a time when local intelligence is of immense importance as evidenced by the unfortunate events of August.”

14.4 In the name of Councillor Lavender

"This council congratulates the Government on its plans to include 16 and 17 year olds in legislation for mandatory custodial sentences for people who use a knife to threaten or endanger a person. This council further notes the crucial role played in securing this change in the law by Enfield North MP Nick de Bois who led the campaign in Parliament, the Enfield Independent newspaper that promoted the petition signed by hundreds of residents calling for 16 and 17 year olds to be included in the legislation, anti-knife crime groups such as STOP, TAGS, Anti-knife UK and the Enfield-based Nelson-Williams Foundation, and the borough's two other MPs David Burrowes and Andy Love".

15. MEMBERSHIPS

To confirm any changes to committee memberships. The following changes had been notified at the time of agenda dispatch:

(a) Planning Committee

Councillor Cranfield to replace Councillor Buckland.

(b) Children & Young People Scrutiny Panel

Councillor Cranfield to be replaced by vacancy (name to be notified)

(c) Conservation Advisory Group

Councillor Cranfield to be replaced by vacancy (name to be notified)

- (d) Enfield Council Working Group on the Olympic & Paralympics Games
Councillor Cranfield to be replaced by vacancy (name to be notified)

16. NOMINATIONS TO OUTSIDE BODIES

To confirm any changes to nominations to outside bodies.

17. CALLED IN DECISIONS

None received.

18. DATE OF NEXT MEETING

18.1 The next meeting of the Council will be held on Wednesday 25 January 2012 at 7.00 p.m. at the Civic Centre.

18.2 Council is asked to note that a date for the Council (budget setting) meeting in February 2012 is currently being considered, as part of a process being co-ordinated across London, through London Councils.

Once this approach has been agreed, approval is being sought to delegate authority to the Assistant Director Corporate Governance in order to set a final date for the Council (budget setting) meeting in February 2012, in consultation with the Mayor, Leader of the Council and Leader of the Opposition Group.

19. EXCLUSION OF THE PRESS AND PUBLIC

To consider passing a resolution under Section 100A(4) of the Local Government Act 1972 excluding the press and public from the meeting for the item of business listed on the part 2 of the agenda on the grounds that it involves the likely disclosure of exempt information as defined in those paragraphs of Part 1 of Schedule 12A to the Act (as amended by the Local Government (Access to Information) (Variation) Order 2006).

(Please note there is no Part 2 Agenda).

COUNCIL - 21.9.2011

**MINUTES OF THE MEETING OF THE COUNCIL
HELD ON WEDNESDAY, 21 SEPTEMBER 2011****COUNCILLORS****PRESENT**

Christiana During (Mayor), Kate Anolue (Deputy Mayor), Jayne Buckland, Chaudhury Anwar MBE, Alan Barker, Caitriona Bearryman, Chris Bond, Yasemin Brett, Alev Cazimoglu, Lee Chamberlain, Bambos Charalambous, Yusuf Cicek, Christopher Cole, Ingrid Cranfield, Dogan Delman, Marcus East, Patricia Ekechi, Achilleas Georgiou, Del Goddard, Jonas Hall, Christine Hamilton, Ahmet Hasan, Elaine Hayward, Robert Hayward, Denise Headley, Ertan Hurer, Tahsin Ibrahim, Chris Joannides, Eric Jukes, Jon Kaye, Nneka Keazor, Joanne Laban, Henry Lamprecht, Michael Lavender, Dino Lemonides, Derek Levy, Paul McCannah, Donald McGowan, Chris Murphy, Ayfer Orhan, Ahmet Oykenner, Anne-Marie Pearce, Daniel Pearce, Martin Prescott, Geoffrey Robinson, Michael Rye OBE, George Savva MBE, Rohini Simbodyal, Alan Sitkin, Andrew Stafford, Doug Taylor, Glynis Vince, Ozzie Uzoanya, Tom Waterhouse, Lionel Zetter and Ann Zinkin

ABSENT

Ali Bakir, Andreas Constantinides, Christopher Deacon, Simon Maynard, Terence Neville OBE JP, Toby Simon and Edward Smith.

52**ELECTION (IF REQUIRED) OF THE CHAIRMAN/DEPUTY CHAIRMAN OF
THE MEETING**

This was not required.

53**MAYOR'S CHAPLAIN TO GIVE A BLESSING**

Father John from St Demetrios Church gave the blessing.

54**MAYOR'S ANNOUNCEMENTS (IF ANY) IN CONNECTION WITH THE
ORDINARY COUNCIL BUSINESS**

The Mayor made the following announcements:

- She thanked Father John from Demetrios Church for offering the prayers.
- She welcomed Councillor Lee Chamberlain back to the Council and congratulated him on being elected to Bush Hill Park Ward.

COUNCIL - 21.9.2011

- She had attended Edmonton Carnival in July and had enjoyed seeing so many members of the community taking part and enjoying the day.
- She had visited the Autumn Show in Enfield Town Park in September and had enjoyed walking round the park, meeting the stall holders, watching some of the activities, and visiting the horticultural marquee. The day was a huge success with all the communities enjoying themselves.
- On Sunday 3 September she was joined by representatives from the Navy and the Royal British Legion, and a Representative of the Russian Defence Attache's Office for a wreath laying to commemorate the 70th Anniversary of the start of the Russian convoys at the Baltic War Memorial at the Civic Centre. This would become an annual event.
- The annual Mayor's Charity Fun Run was held on 11 September 2011. It was good to see so many children, young people, and the expert runners taking part. There was a lovely atmosphere and hopefully lots of money would be raised for the Mayor's charity and other worthy causes.
- The fund raising Greek dinner that Councillor George Savva organised was a great success and it raised over £970 for the Mayor's charity. Thanks were given to Councillor Savva.
- The Mayor hoped that as many Members as possible would be able to attend her Harvest Festival Civic Service on Sunday 2 October at 10.00am at St Matthews Church, South Street at 10am.

**55
MINUTES**

AGREED that the minutes of the Council meeting held on 6 July 2011 be confirmed and signed as a correct record

**56
APOLOGIES**

Apologies for absence were received from Councillors Ali Bakir, Andreas Constantinides, Toby Simon, Simon Maynard, Terence Neville, and Edward Smith. Apologies for lateness were received from Councillors Chris Bond and Martin Prescott.

**57
DECLARATION OF INTERESTS**

There were no declarations of interest in respect of any items on the agenda.

COUNCIL - 21.9.2011

58

ANNUAL TREASURY MANAGEMENT OUTTURN REPORT 2010/11

Councillor Stafford (Cabinet Member for Finance and Property) moved and Councillor Lemonides seconded the report of the Director of Finance, Resources and Customer Services (No.95) reviewing the activities of the Council's Treasury Management function over the financial year ended 31 March 2011.

NOTED

1. The key activities outlined within the report relating to the Council's Treasury Management function.
2. Following concerns highlighted by the Opposition Group it was reported that the level of Council debt outstanding at year end had been reduced to £218m from £220m.

AGREED to accept the Treasury Outturn report.

59

ENFIELD JOINT STROKE STRATEGY 2011-2016

Councillor McGowan (Cabinet Member for Adult Services and Care) moved and Councillor Savva seconded the report of the Director of Health, Housing and Adult Social Care (No.77) proposing the agreement of a 5 year Enfield Stroke Strategy jointly with NHS Enfield.

NOTED

1. Cabinet on 14 September 2011 had agreed to recommend to Council approval of the Enfield Joint Stroke Strategy 2011-2016 and associated implementation plan.
2. The nine strategic objectives within the Strategy (as detailed within section 3.4 of the report), which had been aligned with the national stroke strategy and designed to address the main findings from the Care Quality Commission of Stroke Services in Enfield.
3. Each of the strategic objectives included a number of associated commissioning intentions designed to improve the range and quality of local stroke services; address health inequalities related to stroke; improve awareness of stroke symptoms; and reduce the prevalence of stroke.
4. The direct costs associated with strokes in Enfield and funding plan developed for implementation of the Strategy over the next three year period, as detailed within section 3.3 of the report
5. The cross party support expressed by members towards the Strategy and implementation plan.
6. Members congratulations to all concerned in development of the Strategy.

AGREED to approve the Enfield Joint Stroke Strategy 2011-2016 and associated implementation plan.

60

SCRUTINY ANNUAL WORK PROGRAMME 2011-12

Councillor Sitkin (Vice Chair of Overview and Scrutiny Committee) moved and Councillor Brett seconded the report of the Overview and Scrutiny Committee (No.74) setting out the annual work programme for the Council's Scrutiny Panels and Overview and Scrutiny Committee.

NOTED

1. Cabinet on 14 September 2011 agreed to recommend to Council formal adoption of the annual Scrutiny Work Programme for 2011/12.
2. The following concerns highlighted by members during the debate on this item:
 - a. To ensure that scrutiny was able to undertake robust and tangible challenge to the Executive;
 - b. To ensure the effective use of call-in.

AGREED to formally adopt the annual Scrutiny Work Programme 2011/12.

61

AUDIT COMMITTEE ANNUAL REPORT 2010-11

Councillor Lemonides (Chair of Audit Committee) moved and Councillor Ibrahim seconded the Audit Committee Annual Report detailing the work undertaken by the Council's Audit Committee over the 2010/11 municipal year.

NOTED

1. The report had been agreed at the Audit Committee meeting held on 7 July 2011.
2. The five key areas of work undertaken by the Audit Committee during 2010/11, as detailed within the report.
3. The thanks expressed to Council staff and external auditors for their support and contribution towards the work of the Committee over the year.

AGREED to accept the Audit Committee Annual Report 2010/11.

62

CHANGE IN THE ORDER OF BUSINESS

Councillor Brett moved and Councillor Taylor seconded a proposal to change the order of business on the agenda under paragraph 2.2 (page 4-5) of the Council's Procedure Rules to enable the meeting to take item 12 (Motions) as the next item of business, with the motions to be taken in the following order 12.4; 12.5; 12.6; 12.2 and 12.1.

Councillor Headley confirmed that motion 12.3 had been withdrawn.

This was agreed by the Council.

**63
MOTIONS**

1.1 Councillor Taylor moved and Councillor Headley seconded the following motion:

“Council notes:

1. The disturbances in Enfield and the action of the emergency services and Council during, and in the aftermath of, the disturbances.
2. The high level of community and business engagement since the disturbances.
3. The need for the best evidence based approach to ensure there are no repetitions of the disturbances.
4. The tremendous work of the Council staff in bringing normality back to Enfield.

Council welcomes:

1. The already agreed ESP review of youth issues bringing together a multi-agency approach.
2. The Respect for Enfield and resident support for Enfield.
3. The Parent Champions / Parent Engagement Panel launched last Saturday targeting hard to reach communities and young people tackling gang and knife crime.

Council agrees:

1. To establish a Member led review to examine the specific Enfield dimension. The review to be constituted of 4 Majority; 2 Minority Councillors.
2. To feed views into the National Inquiry established by the Government.”

During a lengthy debate, Members expressed thanks to the Police, emergency services and Council staff for their exceptional work at the time of the disturbances and in bringing normality back to Enfield afterwards. Members also noted the following Terms of Reference for the Council Commission proposed under the motion.

Terms of Reference for the Council Commission to examine the August 2011 disturbances in Enfield

Reporting to full Council by January/February 2012

Lead Officer: Simon Tendeter

Terms of reference:

COUNCIL - 21.9.2011

1. To gather evidence to:
 - (a) examine the causes of the disturbances in Enfield in August 2011;
 - (b) understand the reasons which led people to take part;
2. To submit findings to the National Independent Riots Communities and Victims Panel and in due course LBE Cabinet and Council.
3. To report back to Council on the outcome of the Commissions review and make recommendations on actions to address its findings. (This was highlighted as an addition to the Terms of Reference at the Council meeting)

The motion was agreed unanimously.

- 1.2 Councillor McGowan moved and Councillor Anne-Marie Pearce seconded the following motion:

“This Council condemns the decision of the Secretary of State for Health to ignore the views of local residents and endorse the closure of vital services at Chase Farm Hospital.

This Council calls on the Leader of the Council to write in the strongest possible terms to the Secretary of State calling on him to reverse his decision and stand by pledges made by leading figures of the Conservative Party to Save Chase Farm. Council invites the Leader of the Opposition to co-sign the letter.”

Following a lengthy debate the motion was agreed unanimously. During the debate it was noted that the Health & Wellbeing Scrutiny Panel had been asked to ensure that implementation of the findings from the Independent Review Panel (IRP) in relation to primary care and transport were monitored and kept under review.

- 1.3. Councillor Hamilton moved and Councillor Charalambous seconded the following motion:

“Enfield Council calls on the Mayor of London to think again about his decision to make cuts to policing in London and in Enfield.

The number of police in London will fall by 1907 officers between 2010 and 2013/14. Enfield has already lost five experienced sergeants because of decisions taken by the Tory Mayor of London and hundreds of more sergeants have been forced to reapply for their own jobs.

This Council calls on the Mayor of London to:

COUNCIL - 21.9.2011

1. Reverse his decision to cut 1907 police officers in London over the next three years, an average of 50 for every London borough including Enfield.
2. Drop his plans to cut 300 sergeants from London's 630 Safer Neighbourhood teams.
3. Abandon his plans to force 600 London police sergeants to reapply for their own jobs."

Following a debate the motion was put to the vote and agreed with the following result:

For: 30

Against: 22

Abstentions: 2

64

COUNCIL PROCEDURE RULE 8 - DURATION OF COUNCIL MEETING

NOTED in accordance with Council Procedure Rule 8 (page 4-7 – Part 4), the Mayor advised the Council that the time available for the meeting had now elapsed and the remaining items of business would be dealt with in accordance with the expedited procedure.

The remaining items of business were then considered without debate.

65

COUNCILLORS' QUESTION TIME

NOTED the fifty two questions on the Council's agenda which had received a written reply from the relevant Cabinet Member.

66

MOTIONS

The motions set out below lapsed due to lack of time:

1.1 In the name of Councillor Headley

"This Council resolves to hold a public meeting to ascertain the true nature and extent of the problems suffered by the residents of Eastern Enfield with odour emitted by the Deephams Sewage Works. The Council resolves to hold this meeting at the earliest opportunity and before any further decisions are made or responses made by Enfield Council on the residents' behalf."

1.2. In the name of Councillor Lamprecht

"The consultation on the future of Southgate Old Town Hall was held during August when many local residents were away on holiday. The Council therefore resolves to reopen the consultation on the future use of

COUNCIL - 21.9.2011

Southgate Old Town Hall and hold a public meeting to engage with residents in a constructive dialogue about the proposed use of this Civic amenity.”

67

USE OF URGENCY PROCEDURES: MONITORING UPDATE

NOTED the details of the following decisions taken under the Council's urgency procedure relating to the waiver of call-in and, where necessary, the Forward Plan along with the reasons for urgency. These decisions had been made in accordance with the urgency procedures set out in Paragraph 17.3 of Chapter 4.2 (Scrutiny) and Paragraph 16 of Chapter 4.6 (Access to Information) of the Council's Constitution:

1. To grant a 125 year lease to the Woodpecker Hall Primary Academy
2. To agree the contract for adaptations to classrooms at the Prince of Wales Primary School
3. Housing Quarterly Electricity Contract Renewal
4. Cyntra Decent Homes Scheme 2011/12
5. Oasis Academy Hadley: Relocation of Power Cable

68

MEMBERSHIPS

AGREED the following changes to committee memberships

- (1) The appointment of Mr Anthony Murphy as the Education Statutory Co-Optee nominated by the Catholic Diocesan on the following bodies:
 - Overview & Scrutiny Committee
 - Children & Young People Scrutiny Panel
 - Member Governor Forum
- (2) Complaints against Curriculum Panel - Councillor Chamberlain to fill vacancy created following Eleftherios Savva's resignation as a councillor.
- (3) Planning Committee - Councillor Chamberlain to replace Councillor Waterhouse.
- (4) Public Transport Consultative Group – Councillor Chamberlain to fill vacancy created following Eleftherios Savva's resignation as a councillor.
- (5) Staff Appeals Panel – Councillor Lamprecht to fill vacancy created following Eleftherios Savva's resignation as a councillor.

69

NOMINATIONS TO OUTSIDE BODIES

AGREED the following changes to representation on outside bodies:

- (1) Edmonton United Charities - Councillor Chamberlain to fill vacancy created following Eleftherios Savva's resignation as a councillor.
- (2) Enfield Homes - Councillor Chamberlain to replace Councillor Barker.
- (3) London Borough of Enfield/Enfield Racial Equality Council – Councillor Anwar to replace Councillor Cranfield.
- (4) London Councils Grants Committee – Councillor Hamilton to be appointed as the Council's main representative with Councillor Stafford as deputy.

70

CALLED IN DECISIONS

None received.

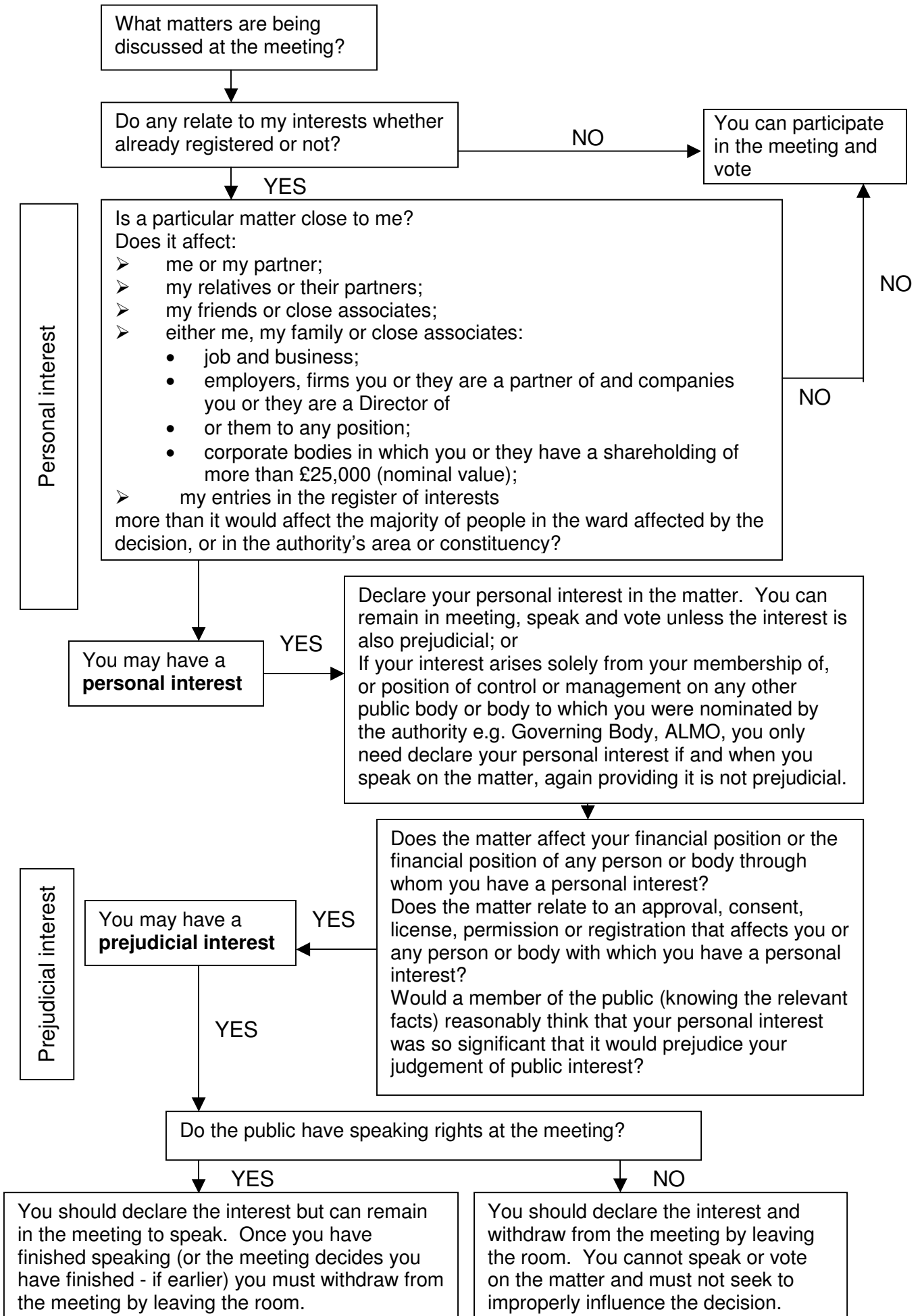
71

DATE OF NEXT MEETING

NOTED that the next meeting of the Council would be held on Wednesday 9 November 2011 at 7.00pm at the Civic Centre.

This page is intentionally left blank

DECLARING INTERESTS FLOWCHART - QUESTIONS TO ASK YOURSELF



Note: If in any doubt about a potential interest, members are asked to seek advice from Democratic Services in advance of the meeting.

This page is intentionally left blank

OPPOSITION BUSINESS PAPER – COUNCIL 9 NOVEMBER 2011**Supporting the formation of Free Schools in Enfield**

A Free school is a school funded by the taxpayer, non-selective and free to attend, not controlled by the local authority, but harnessing the enthusiasm of local people who want to be more involved with the delivery of education.

Background

In our last opposition business we focused on practical ways to improve the number of school places available, however it is also important to offer good quality and diverse educational choices to students and parents. The free schools programme presents the opportunity for this Council to not only encourage the creation of much needed school places, but to see increases in educational opportunities for all, whilst driving up standards.

This opposition business seeks to set out the direction Enfield Council should take to give parents more choice in the education of their children and support the delivery of better and more diverse education for all.

Recommendations

We submit that the following recommendations are put to this Council meeting:

1. That Enfield Council undertakes to support applications by parents, interested persons/groups to establish free schools within the borough.
2. That Enfield Council must prioritise and encourage Meetings with potential organisations/groups with a view to creating new schools in the borough to help alleviate a shortage of school places and improve education standards.
3. This Council, while valuing the excellent work and good results produced by many schools in the borough, recognises that the Free School programme also creates the opportunity to revitalise the educational system where poor standards and lack of parental choice exist.
4. That the Council seeks to encourage the creation of free schools by highlighting suitable sites and advertising their availability, producing a literature pack for parents/groups interested in this option.
5. That this Council undertakes not to jeopardise the opportunity for the creation of free schools by selling off property and sites suitable for free

schools, particularly where they are identified by parents as a possible site.

6. That this Council assign the responsibility for delivering on this agenda to the portfolio for the Director of Schools and Children's Services.

Council Constitution: Part 4 Chapter 4.1 – Council Procedure Rules

13. OPPOSITION BUSINESS

(Updated: Council 23/1/08 & Council 1/4/09 & Council 11/11/09)

13.1 The Council will, at four meetings a year, give time on its agenda to issues raised by the Official Opposition Party (second largest party). This will be at the 1st meeting (June), and then the 3rd, 4th and 6th meetings out of the 7 ordinary meetings programmed each year (unless otherwise agreed between the political parties). A minimum 45 minutes will be set aside at each of the four meetings.

13.2 All Council meetings will also provide opportunities for all parties and individual members to raise issues either through Question Time, motions or through policy and other debates.

(Updated: Council 11/11/09)

13.3 The procedure for the submission and processing of such business is as follows:

(a) The second largest party shall submit to the Assistant Director, Corporate Governance a topic for discussion no later than 21 calendar days prior to the Council meeting. This is to enable the topic to be fed into the Council agenda planning process and included in the public notice placed in the local press, Council publications, plus other outlets such as the Council's web site.

(b) The Assistant Director, Corporate Governance will notify the Mayor, Leader of the Council, the Chief Executive and the relevant Corporate Management Board member(s) of the selected topic(s).

(c) Opposition business must relate to the business of the Council, or be in the interests of the local community generally.

(d) If requested, briefings on the specific topic(s) identified will be available to the second largest party from the relevant Corporate Management Board member(s) before the Council meeting.

(e) No later than 9 calendar days (deadline time 9.00 am) prior to the meeting, the second largest party must provide the Assistant Director, Corporate Governance with an issues paper for inclusion within the Council agenda. This paper should set out the purpose of the business and any recommendations for consideration by Council. The order in which the business will be placed

on the agenda will be in accordance with paragraph 2.2 of Part 4, Chapter 1 of this Constitution relating to the Order of Business at Council meetings.

- (f) That Party Leaders meet before each Council meeting at which Opposition Business was to be discussed, to agree how that debate will be managed at the Council meeting

(Updated: Council 11/11/09)

- (g) The discussion will be subject to the usual rules of debate for Council meetings, except as set out below. The Opposition business will be conducted as follows:

(i) The debate will be opened by the Leader of the Opposition (or nominated representative) who may speak for no more than 10 minutes.

(ii) A nominated member of the Majority Group will be given the opportunity to respond, again taking no more than 10 minutes.

(iii) The Mayor will then open the discussion to the remainder of the Council. Each member may speak for no more than 5 minutes but, with the agreement of the Mayor, may do so more than once in the debate.

(iv) At the discretion of the Mayor the debate may take different forms including presentations by members, officers or speakers at the invitation of the second largest party.

(v) Where officers are required to make a presentation this shall be confined to background, factual or professional information. All such requests for officer involvement should be made through the Chief Executive or the relevant Director.

(vi) The debate should contain specific outcomes, recommendations or formal proposals

(Updated: Council 22/9/10)

(vii) Before the Majority party concludes the debate, the leader of the Opposition will be allowed no more than 5 minutes to sum up the discussion.

(viii) The Majority Group will then be given the opportunity to say if, and how, the matter will be progressed.

(ix) If requested by the Leader of the Opposition or a nominated representative, a vote will be taken

(updated Council: 22/9/10)

MUNICIPAL YEAR 2011/2012 REPORT NO. 102**MEETING TITLE AND DATE:**

Cabinet Meeting
12th October 2011
Council
9th November 2011

REPORT OF:

Director of Regeneration,
Leisure and Culture

Agenda – Part: 1**Item: 8**

Subject: Implementing the Enfield Food Strategy KD3180.

Wards: All

Cabinet Member consulted: Cllr Goddard

Contact officer: Stacey Clift 020 8379 3876/ Judy Flight 020 8379 3175 (e-mail: Stacey.clift@enfield.gov.uk)

1. EXECUTIVE SUMMARY

- 1.1 The draft Enfield Food Strategy – Every Bite Matters (2010) consultation was completed, with a wide range of comments received from diverse sources.
- 1.2 Various projects within the Enfield Food Strategy during 2010-11 have made progress.
- 1.3 Updates have been made to the Enfield Food Strategy to reflect the consultation feedback and a 3 year Enfield Food Strategy action plan has been devised, which is shorter and more focussed.
- 1.4 Policy changes that are required to implement the Enfield Food Strategy have been identified.
- 1.5 The Enfield Strategic Partnership has adopted the Enfield Food Strategy and discussions are underway on what role the Enfield Strategic Partnership Thematic Action Groups will play in identifying and implementing key interventions to support the Enfield Food Strategy.

2. RECOMMENDATIONS

That the

- 2.1 Cabinet approves the development of the Enfield Food Strategy 3 Year Action Plan incorporating consultation feedback.
- 2.2 The Food Sector Board will manage the Enfield Food Strategy 3 Year Action Plan

3. BACKGROUND

- 3.1 The Enfield Food Strategy provides an opportunity for Enfield to adopt a holistic approach to the way we produce and eat food. The Enfield Food Strategy is comprised of four key strands/ themes: (a) Cultivating Communities, (b) Supporting Business, (c) Healthier Lifestyles and (d) Respecting the Environment. It seeks to identify, coordinate and build on the extensive food-related activity in the Borough, providing advice and support for food businesses, continuing delivery of 'cook and eat' programmes in schools and improving public sector procurement standards.
- 3.2 Progress made with initiatives relating to the Enfield Food Strategy during 2010/2011 are detailed in **Appendix 1**.
- 3.3 The Enfield Food Strategy consultation was carried out over a period of 12 weeks from 28th July until the 22nd October 2010. A wide range of consultations were carried out with the public, voluntary organisations, businesses and internally within the Council (See Table 1)

Consultation Event	Number consulted
Parks and Open Spaces Strategy Launch	100-150
Enfield Autumn Show	400-600
Ponders End Green and Healthy Living Day	100-150
Enfield Town Library Drop in Session	20-30
Edmonton Green Town Library Drop in Session	15-20
Enfield Homes Springfield Road Festival	20-30
Home Support Network Event	20-30
Edmonton Cook Off	300
Total	675- 1110

Table 1: Food Strategy Consultation and Engagement

- 3.4 The draft Enfield Food Strategy was published on the Enfield Council website in order to collect electronic feedback. Items were also put on Council Website 'Latest News' section, the Council magazine – Our Enfield and the voluntary sector e-bulletins and publications in order to raise general awareness and encourage the public to provide feedback.
- 3.5 Key messages obtained from the consultation process have necessitated a need for a shorter and more focussed action plan that concentrates on the following areas:
- Demand for more land for residents to grow food, particularly around housing estates.

- There is a need to evaluate the role of allotments in social enterprise and review of local allotments.
- A high level of concern was expressed over the growth of take - away outlets and their popularity with school children.
- A high level of support was expressed for schools to educate children more on growing food and cooking.
- There was much interest in learning and skills training. Capel Manor Horticultural College is seen as a unique asset for Enfield that can be accessed to increase food growing expertise in the borough.
- Community co-operatives and farmers markets were strongly supported.
- Enfield has a strong food and drink industry which is to be supported by the action plan.
- Some businesses expressed concern about food waste.
- There is a strong support for fairly traded products.
- Greater connections need to be made with the Enfield Food Strategy and the Child and Family Poverty Strategy, particularly with regards to nutrition and infant mortality/ infant welfare.
- There is a need to assess the market gardening sector in the north of the Borough and its contribution to the Enfield Food Strategy and employment growth.

- 3.6 Officers are working to incorporate this feedback and develop a SMART action plan to implement the Enfield Food Strategy around the key themes of (a) Cultivating Communities, (b) Supporting Business, (c) Healthier Lifestyles and (d) Respecting the Environment (see **Appendix 2**). The Sustainable Communities Team within Regeneration, Leisure and Culture will work with Communities, Partnerships and External Relations team and the Thematic Action Group Chairs together with relevant directorates in the Council to organise specific events to populate the action plan with realistic partnership interventions. It is important to note that in implementing the Enfield Food Strategy we are working in partnership with the Enfield Strategic Partnership and supporting partners and agencies. Consequently, the Enfield Food Strategy 3 year Action Plan is designed with the intention of being a “live” and evolving document that will be regularly updated to reflect changing priorities and new interventions as they come on board and will therefore allow for partners to pursue aspects of the Enfield Food Strategy, as they see appropriate.
- 3.7 The revised 3 Year Food Strategy will be mindful of the emerging 3 year Child and Family Poverty action plan and will aim to contribute to child and family poverty issues around nutrition and wellbeing.
- 3.8 Two distinct policy changes are required to implement part of the action plan of the Enfield Food Strategy.
- a) Development Controls to limit provision of new takeaways near Schools. New planning policy is being looked at for the Development Management Document that is currently being produced.

- b) Work to improve the nutritional content of food from takeaways and restaurants is under the management of the Environment Health team. More work is required to inform new policy developments.

4. ALTERNATIVE OPTIONS CONSIDERED

- 4.1 A wide-ranging Food Strategy and Action Plan is considered to be the most effective approach to addressing the issues identified.

5. REASONS FOR RECOMMENDATIONS

- 5.1 The revised Enfield Food Strategy is based on the feedback received during consultation. The Food Strategy will help Enfield to address some of the Borough's key challenges while maximising the benefits of strategic opportunities such as neighbourhood regeneration. The focus is on healthier eating and lifestyles, economic prosperity, job creation and food security. Many of the projects that will emerge from this strategy deliver multiple benefits, to society, economy and the environment.

6. COMMENTS OF THE DIRECTOR OF FINANCE, RESOURCES AND CUSTOMER SERVICES AND OTHER DEPARTMENTS

6.1 Financial Implications

The strategy includes an action Plan (Appendix 2) which set out the anticipated sources of funding to achieve each of the actions identified.

Individual proposals within the action Plan will be subject to an appraisal of resource requirement prior to its implementation and correct processes will be followed to ensure that the required funding is in place.

Where possible the plan will be delivered by extending and adapting existing services and within existing budgetary resources. However it does indicate that external funding will be sought to deliver the ambitions of the Strategy, these proposals are subject to successful external bids

6.2 Legal Implications

- 6.2.1 The Council has the power to do anything that promotes the economic, social and environmental well-being of its area pursuant to section 2 of the Local Government Act 2000. The implementation of the Food Strategy by the Council is considered likely to improve the social, economic and environmental well-being of the Borough. There is no express prohibition, restriction or limitation contained in a statute against the use of the section 2 power in this way.

- 6.2.2 Where the need arises to enter into an agreement for goods, works or services in order to implement the Food Strategy this must be done in accordance with the Council's Constitution, namely the Contract Procedure Rules and the contract must

be in a form approved by the Assistant Director for Legal Services.

- 6.2.3 The use of Council owned land and particularly Allotments will need to be considered in light of any applicable legislation and in the context of which the land is held by the Council. Allotments must therefore be used wholly or mainly cultivated by the occupier for the production of vegetable or fruit crops for consumption by himself or his family.

7. KEY RISKS

- 7.1 A detailed risk register has been prepared (**see Appendix 3**)
- 7.2 Implementing the Enfield Food Strategy also provides a number of opportunities to address issues such as educating children more on growing food and cooking."

8. IMPACT ON COUNCIL PRIORITIES

8.1 Fairness for All

The Food Strategy aims to be inclusive, benefiting people of all communities in the borough. The Strategy tackles issues around spatial inequalities in health, access and income issues relating to healthy food, and the specific requirements of different parts of the community.

8.2 Growth and Sustainability

The Food Strategy will empower people, helping them to understand how their buying habits can make a difference to the local economy. Sustainability is at the core of the Enfield Food Strategy, encouraging respect for the environment while seeking to promote sustainable economic growth.

8.3 Strong Communities

The Enfield Food Strategy seeks to increase individual and community involvement with food growing and raise awareness about the health and environmental impacts of production and consumption. It will promote healthier communities that are more cohesive and sustainable. The Strategy will provide opportunities for people to work more with each other, community organizations and the Council.

9. PERFORMANCE MANAGEMENT IMPLICATIONS

- 9.1 Implementation of the Enfield Food Strategy will contribute to the achievement of targets relating to reducing inequality, sustainability and improving health: 1(a) and 1(e) of Aim 1 "Build prosperous, sustainable communities"; 2(c), 2(d) and 2(e) of Aim 2-"A cleaner, greener, sustainable

Enfield”, and 5(c), 5(d) and 5(f) of Aim 5 - “A healthier Enfield where people are able to live independent lives”; *Putting Enfield First: Council Business Plan: 2009/2012*

Background Papers

- Department of the Environment, Food and Rural Affairs: ‘Food 2030’, UK’s Food Strategy (2010)
- Mayor of London: ‘The Mayor’s Food Strategy: Healthy and Sustainable Food for London’ (2006)

Appendix 1: Food Strategy - Work Commenced and Progress Made to Date

Project Theme and Name	Project Description
<p>Cultivating Communities</p> <p>Urban Growing Sites</p>	<p>Signed up as a borough to Capital Growth. Capital Growth is a partnership initiative between London Food Link, the Mayor of London and the Big Lottery's Local Food Fund. It aims to create 2012 new community food growing spaces across London by the end of 2012.</p> <p>Mapping existing allotments and food growing spaces and identifying up to 60 new sites is ongoing. There is a community vegetable garden on the Shires Estate through the Capital Growth Scheme. Jubilee Park growing space and Ponders End Pilot Community Garden. Development of guidance on maintenance/ leases and support to community groups to apply for Capital Growth is under development. Food Growing Competitions have started and further engagement techniques are being sought to increase participation. The Council Allotment Service are working to maintain and improve current allotment spaces. Enfield in Bloom now has an "allotments or innovative growing spaces" as a new award category. Enfield in Bloom's allotment site in Trent Country Park has been in operation for four years as part of the schools programme Grow and Eat. The Enfield in Bloom Green House (sponsored)</p>
<p>Co-operatives and Micro Enterprises</p>	<p>Food Enterprise Support - Procurement process has commenced for a community food pilot (growing/kitchen) with the view to further roll out in the future. Suitable groups have begun to be identified as part of this procurement process. An allotment area has been secured for this project. This project is being commissioned by Sustainable Communities</p>
<p>Agricultural and Horticultural Learning Sites</p>	<p>The organisation, Community and Environment Project Office (CEPO) and the Ponders End Community Development Trust have run a range of food growing drop in sessions aimed at a variety of groups such as individual growers, families and those with mental health challenges in the Ponders End area. Middleton House Victorian Kitchen Garden restoration project is bringing together food growing, education for school children and links for locally sourced food and work with Capel Manor College has begun to create an identity for the borough as a showcase for agricultural and horticultural good practice.</p>
<p>Supporting Business</p> <p>SME Investment Support</p>	<p>Existing food businesses in Enfield have been profiled to inform dialogue and develop targeted advice and support. This will help businesses to move beyond compliance and towards sustainable business performance. Creation of a comprehensive database which includes the food sector was completed in March 2011. As part of the development of the Local Economic Assessment sector based meetings were held which included food wholesale, food manufacturing and allied logistics. An interest was expressed in setting up a food sector network/ forum to help develop further interest in supporting local suppliers and primary authority relationships with food businesses building on from the pilot from the Local Economic Assessment. We are setting up a food/ drink sector Board through the NLCC to support the growth of the sector in the Borough.</p>
<p>Enfield Supporting Fair Trade</p>	<p>Fair trade borough status is being maintained and Fair Trade Campaign and corresponding directory of Fair Trade traders is ongoing. Over a 100 residents attended the "A Thousand Fair Trade Towns Event" on the 4th June 2011, where fair trade cake and tea were sampled.</p>
<p>Preventing Illegal Food Products</p>	<p>Mapping of the most common illegal products and who sells them has begun. Environment Services are currently developing the best channels in which to engage with communities which are likely to buy these products. Development of a communications plan to raise awareness with both businesses and individuals to be commenced.</p>
<p>Developing Catering Skills</p>	<p>FEAST kitchen installed at Southgate College using match funding from the School Food Trust and Southgate College. So far used for Enfield school catering staff and some community users businesses. Enfield school catering staff can train for NVQ catering levels 1, 2 and 3. Food related training courses are run in food handling and compliance, with ESOL provision built in where required. Thus ensuring clients become job aware/ job ready for paid positions in the food sector.</p>

<p>Improving Food Safety & Compliance</p>	<p>0 & 1 star premises project: "Score the Doors" - simpler food safety management system has been produced than Safer Food Better Businesses along with "starter pack" available for small food businesses. Participation in the project involves the owner to signing an agreement that they will work with the council to improve their compliance (star rating) e.g. SALSA Accreditation to improve food safety. Currently dealing with 20 premises. The majority of premises involved are showing significant improvement. Businesses will be re-star rated on completion of the project. Ongoing inspection programme and 1:1 coaching sessions on Safer Food Better Business are being provided (food safety management system) during inspections as required. Between 10-12 training sessions per year for food handlers for CIEH Level 2 Food hygiene training course qualifications are run.</p> <p>Planning policy team to integrate food into Local Development Framework and limit provision of new takeaways near schools via development control documentation. An initial sample was conducted on nutritional content of takeaway food in March 2010, as part of a London wide survey. Dietician intervention and guidance about nutritional content and cooking methods of food to reduce excesses in a small number of businesses was implemented in March 2011.</p>
<p>Healthier Lifestyles</p>	<p>Nutrition and Healthy Eating in Schools</p> <p>School fruit and vegetable scheme to encourage consumption of 5 portions of fruit a day. Vegetable gardens at schools. Lets Get Cooking programme is in operation (12 schools have full membership and 18 have associate membership). NHS Enfield and partners ran 3 weight management programmes for children and young people and a universal programme for parents on healthy eating and being active called 'Change4Life', delivered in 9 schools. The Council is supporting a free school meals pilot in one school starting in Sept 2011 to improve healthy/obesity. Extended School Clubs on food hygiene and food preparation/ composition are in place</p> <p>Asian Women's Group Cooking Workshop and Community Dietician Workshop activities have taken place, which has been developed into a recipe book on nutritional eating. Regular Cook and Eat Schemes are in operation encouraging family nutrition.</p>
<p>Community Nutrition and Healthy Eating</p>	<p>Wheeile Bin Food Waste Collection Pilot completed - which provides a collection of a higher percentage of organic waste. Wider rollout across Enfield currently underway.</p>
<p>Respecting the Environment</p>	<p>Reducing and Recycling Food Waste</p>

Appendix 2
Enfield Food Strategy Action Plan 2011-2014

Supporting Business

Project Name	Planned Outcome	Action Tasks	Responsible Agencies	Responsible Thematic Action Group	Timescales	Interdependencies/ Funding
Communications Strategy	To develop a communications strategy which will disseminate the key messages of the food strategy, helping to engage the wider range of stakeholders	Awareness raising/ promotion of services via circulation of existing literature to partnering agencies, and taking full advantage of the "On the Doors Campaign" (both internal and Enfield Homes)	All	All	2011- 2014	Contained within mainstream funds
Scores on the Doors	To improve the Star rating of those premises related in accordance the Scores on the Door system from Zero to One to a higher rating	Sign up approx 20 premises (retail, catering and takeaways) each of which consistently achieving 0 or 1 rating out of 5 over a period of 2 years using the London Scores on the Doors food hygiene rating scheme to the agreement that they will work with the council to improve their compliance (star rating) Once a month for a period of 6 months local authority inspectors are to visit premises to assess compliance and deliver practical support to improve compliance, including one to-one coaching sessions on Safer Food Better Business are being provided (food safety management system) during inspections as required. To run between 10-12 training sessions per year for food handlers for CIEH Level 2 food hygiene.	Environment Services	Employment	2011- 2014	Contained within mainstream funds
Salt in Bread	To work with 10 independent bakeries to assess and reduce salt content in bread	To use a toolkit to help work with businesses on recipes and standardised sampling to reduce salt levels to the Food Standards Agency target levels for 2010 and 2012	Environment Services	Employment	2011-2012	Contained within mainstream funds as there is a National Local Government Regulation to assess and reduce salt content in bread
Improving Nutrition at Takeaways	To promote and publicise the 10 fast food outlets that participated in the pilot project during 2010/2011. To conduct an evaluation of the Nutritional Content of Takeaway Food Pilot project To improve the nutrition standards of food supplied in take away food premises in Enfield.	Production of promotional and publicity material of the fast food outlets which made improvements to provide healthier choices for customers that took part in the Nutritional Content of Takeaway Food pilot during 2010/11 To produce and publish a final evaluation of the Nutritional Content of Takeaway Food Pilot project To roll out the Nutritional Content of Takeaway Food Pilot into a wider scheme of Healthier Catering Commitment	Environment Services Environment Services Environment Services	Employment/ Health Employment/ Health Employment/ Health	2011-2012 2011-2012 2011-2012	Contained within mainstream funds Contained within mainstream funds Healthier Catering Commitment launched by the CIEH, two undergraduate volunteers to undertake outreach work and Environmental Health Officers

		To develop a protocol for setting up Community Gardens (which includes soil decontamination and exclusion zones)	Enfield Homes CEPO	Housing	2011-2012	Capital Growth Local Lead monies £1000 to support CEPO's work
		To stimulate and signpost volunteers to maintain the community gardens	MIND	N/A	2011-2014	External MIND funds
		To run a range of food growing drop in sessions aimed at a variety of groups such as individual growers, families and those with mental health challenges To develop and run a series of training workshops on food growing/ gardening	Enfield Homes	Housing	2011-2014	Subject to Enfield's Priority Fund
Food Growing Competitions	To encourage participation in Enfield's in Bloom's annual gardening competition and encourage participation in the sponsored allotment competition	To deliver the Enfield in Bloom Competition with an allotment or innovative growing space any size as an award category. Schools have two specific categories, 'Best School Grounds' and 'Best School Grounds with Environmental and Educational Aspect'.	Parks	Housing	2011-2014	Ream Partnership Building Services Consultants paying the cost of the Annual Garden Competition entry forms and posters - £4000. The Local Businesses sponsor the 19 gardening categories at £250 per category
		Due to increased growing of fruit and vegetables within schools an additional category will be introduced to further stimulate/encourage/involve school children with our 'Grow and Eat' programme.				
		To advise and support many schools, local residents, residents associations, library's, parks about allotments and innovative growing spaces with respect for our environment across our borough.				
Grow and Eat	To introduce school children to growing and eating fresh produce	To identify participating schools (13)	Parks	Housing	2011-2014	Contained within mainstream funds - Enfield in Bloom funds each school up to £150 to provide building material
		To identify Lead contact in schools To complete questionnaire/ information sheets To construct a timescale of programme of work To agree Enfield in Bloom input, support, advice and finance Agree date and time of meetings To Prepare site (if applicable) To purchase materials/ plants To Arrange visits to Enfield in Bloom allotments site in Trent Country Park To review school programme monthly To enter into Enfield in Bloom Annual Garden competition				
Market Gardening	To investigate the potential of developing an achievable Market Gardening project within the Borough	To conduct desktop research on the feasibility of conducting a market gardening project To identify specialist growers within the Borough	Cross Departmental	Employment	2011-2014	Contained within mainstream funds

	To celebrate local food growing within the Borough	To investigate the potential for smallscale celebratory events around food growing to take place	All	2011-2014	Subject to funding
Agricultural and Horticulture Learning Sites	To create an identity for the borough as a showcase for agricultural and horticultural good practice.	Still to be inserted- Meeting Scheduled with Capel Manor in September 2011.	Capel Manor, Middleton House, Trent Park	2011-2014	Contained within mainstream funds
Healthier Lifestyles					
Lets Get Cooking Scheme	To support fresh food preparation and healthy eating	Continued delivery of "cook and eat" programmes for children, families and the wider community to support fresh food preparation and healthy eating. "Let's get cooking" is a national network of cooking clubs helping people to learn how to cook	Schools	2011-2014	ILBE, Schools Food Trust - £500 for each event
Nutritional Standards of Pre School Nursery Food	To reduce obesity levels in children in Ponders End by targeting pre school settings to improve the nutritional balance and healthiness of meals to meet the nutritional requirements of 1-5 year olds.	To conduct desktop nutritional analysis of menu items to assist 20 businesses to include or increase the number of healthy menu options	Environment Services	2011-2014	Capital Community Foundation - if bid is successful. If not to seek other streams of funding
Free School Meals Pilot	To implement a free school meals pilot into the Borough to improve the health of pupils and help overcome the substantial numbers of overweight children.	To implement a free school meals pilot project at Eastfield Primary School offering universal access to free school meals which meet nutritional standards	Health/ Children	2011-2012	Contained within mainstream funds
Cashless School Meals	To rollout "cashless" payment school meals programme across all catering services schools in the Borough	To implement "cashless" school meals programme meeting nutritional standards, across all catering services schools in the Borough by 2012/2013	Health/ Children	2011-2014	Contained within mainstream funds
Extended School Clubs	To support healthy eating in schools	To deliver Extended School Clubs on food hygiene and food preparation/ composition	Health/ Children	2011-2014	Contained within mainstream funds
Schools meeting Nutritional Standards	To support healthy eating in schools	To ensure that all catering services primary and secondary schools meet the required food and nutrient based standards (catering services) and improve what is ought and eaten by children in schools (education)	Health/ Children	2011-2014	Contained within mainstream funds
Child Obesity	To tackle childhood obesity (by promoting healthier lifestyles, focussing on early years, schools and school aged young people, creating a healthier environment, workforce development and establishing a care pathway)	Development of a "Childhood Healthy Weight" Strategy	Public Health	2011-2014	Contained within mainstream funds/ Subject to external funding
Respecting the Environment					
Reducing and Recycling food waste	To reduce the food waste in the domestic sector and increase the percentage of food waste that is recycled	Whitee Bin Food Waste Collection Pilot to be rolled out across the Borough, which provides a collection of higher percentage of organic waste	Environment Services	2011-2014	Contained within mainstream funds

This page is intentionally left blank

RISK REGISTER

Appendix 3 Implementing the Food Strategy Risks		Group or Other Entity Risk		Network Realisation Risk						
Risk Identification		Risk Action		Risk Action						
Risk	Like-likelihood	Impact	Risk Score	Existing Controls	Action to Improve Controls	Like-likelihood	Impact	Risk Score	Action Owner	Target Date
Identify and list the relevant risks and the potential impact / consequences of each. Types of risk may include: Strategic, People, Operational, Financial, Regulatory, Information, Regulatory, and Other.	1=Remote 2=unlikely 3=possible 4=probable 5=highly probable	1=insignificant 2=minor 3=moderate 4=major 5=catastrophic, systemic failure	Like-likelihood x Impact (Red) Impact (Red) Amber Green	What existing processes / mitigations are in place to manage the risk? Actual Controls.	What further action (if deemed necessary) is planned to treat the risk to "Green" status?	1=Remote 2=unlikely 3=possible 4=probable 5=highly probable	1=insignificant 2=minor 3=moderate 4=major 5=catastrophic, systemic failure	Like-likelihood x Impact	Who is responsible for the action?	What is the target completion date for this action?
Strategic Risks Risk the Food Strategy would not achieve stated objectives	3	5	15	Stringent performance monitoring by partnering leads using the Covalent system.	Working with PL officers in various departments, monthly project visits with regular reviews.	1	5	5	ESP and associated TAGs	On a quarterly basis.
Financial Risks Risk of projects not being prioritised because funding is contained within mainstream funds	3	4	12	Food Sector Board organised quarterly to encourage joint working across the food sector to stimulate impetus where funding is scarce.	Working with officers in various departments, monthly project visits with regular reviews.	2	4	4	ESP and associated TAGs	On a quarterly basis.
Operational Risks Risks of projects not developing strong networks to assist achievement of project objectives and targets i.e. Cross-referrals	3	4	12	Food Sector Board organised quarterly to encourage joint working across the programme	Monthly review meetings and active contract monitoring by partnership team to facilitate relationships and joint working.	2	4	4	ESP and associated TAGs	On a quarterly basis.
Challenges in recruitment of clients and beneficiaries to the projects to achieve targets and objectives.	3	4	12	Several successful informal systems are in place that will be rolled into 2011-14	Establish further recruitment channels through better marketing and joint working.	2	3	3	ESP and associated TAGs	On a quarterly basis.

This page is intentionally left blank

MUNICIPAL YEAR 2011/2012 REPORT NO. **104**

MEETING TITLE AND DATE:

Cabinet
12 October 2011
Council
9 November 2011

REPORT OF:

Director of Schools and Children's
Services

Contact officer and telephone number:
07960 332974

Agenda - Part: 1	Item: 9
Subject: The Enfield Declaration on becoming a "Global Borough"	
Wards: All	
Cabinet Member consulted: Councillors Doug Taylor, Yasmin Brett and Ayfer Orhan	

1. EXECUTIVE SUMMARY

This is a simple declaration of intent to work towards Enfield becoming a borough that understands how it needs to be outward looking if it wishes to enable its citizens to succeed and to feel empowered to make a contribution.

2. RECOMMENDATIONS

That Cabinet agree to the Declaration.

3. BACKGROUND

Enfield Council has a long history of promoting collaboration and positive relationships locally, nationally and globally. This Declaration arises out of the many years of work, initially undertaken by those in the education sector, on developing understanding of the global dimension and in building international links. Sources of funding from such organisations as the European Union, British Council and Department for International Development have been successfully bid for to develop international projects, links and professional development opportunities. In January 2010 the DMT of the Education, Children's Services and Leisure Department (as it then was) adopted the document "Global Learning for All: A Global Learning Policy and Strategy for Education and Children's Services in Enfield". Following the work developed by schools and education institutions and links with other European countries a number of professionals across the Council came together to develop this statement so that all members of the Enfield community would be better placed to respond to Global Challenges. This proposed Declaration has

developed from involving a variety of people across the Council. The Declaration has been presented and discussed at the Town Twinning and Tourism Working Party.

4. ALTERNATIVE OPTIONS CONSIDERED

No alternative options have been considered as this statement has been widely consulted upon across Council teams and services.

5. REASONS FOR RECOMMENDATIONS

To agree the statement of intent and the process for signing the document. This document will stand as a framework so that all teams and services will be able to examine their service plans, objectives and priorities against the criteria outlined below in the statement.

The Enfield Declaration on becoming a Global Borough

We declare that we are committed to working to make Enfield a borough where all those who live, work or study here have the knowledge, skills and understanding of the concepts necessary to become informed, active and responsible citizens who can think globally and act locally.

Signed:

Leader of the Council

Chief Executive

We believe that this statement is underpinned by our vision as expressed in “Enfield Together”:

“ To build a borough which all people can identify with, feel proud of and where everyone is valued, built upon positive relationships within local communities, which create a sense of belonging”

(Enfield’s Community Cohesion Strategy 2010 – 2014)

We consider that a global borough has the following characteristics:

It is committed to:

- educating all the young people in the borough to become global citizens who think globally and act locally with the knowledge to make informed decisions
- partnership working and understands its interconnectivity with others
- supporting Fair Trade
- providing information and training for staff on global issues

It is a borough which:

- welcomes and celebrates cultural diversity
- ensures that the interests and opinions of those who live, work or study here are understood and responded to

- is outward-looking and ready to engage with the wider world, locally, regionally, nationally and internationally
- understands the ethical and economic benefits and challenges of globalisation
- ensures that policies and strategies reflect this commitment, where appropriate

Date

6. COMMENTS OF THE DIRECTOR OF FINANCE, RESOURCES AND CUSTOMER SERVICES AND OTHER DEPARTMENTS

6.1 Financial Implications

Although there is no specific budget provision for this work, the concept of Global Learning is closely linked to the Council Strategy 'A Fairer Future for All' and the Enfield Strategic Partnership Community Cohesion Strategy 'Enfield Together' As such many much of the work is already in place and is being resourced from within existing budgets, for example within schools.

In the current financial climate, any future projects i.e. a programme to raise awareness of Global Learning would need to be met within existing budgets and staff resources.

6.2 Legal Implications

The Council has a power under s 2 Local Government Act 2000' to do anything which it considers is likely to achieve the promotion or improvement of the economic, social or environmental well-being if it's area .In using this power to agree and promote the Declaration the Council are obliged to have regard to its Sustainable Community Strategy'

6.3 Property Implications

There are no property implications associated with the Statement

7. KEY RISKS

There are no significant key risks associated with the Statement

8. IMPACT ON COUNCIL PRIORITIES

8.1 Fairness for All

This Declaration will enhance the work on this priority in that it recognises the contribution of all Enfield residents and workers in all their diversity ensures that their interests and opinions are understood and responded to and enables the Council to draw on residents' links

and family ties to enrich everyone. It also supports the aim to ensure that all young people achieve to the best of their potential, helping them to realise that their actions can change things.

8.2 Growth and Sustainability

At a time when there are so many challenges facing our community in terms of financial resources and the need to build economic stability this. Already many schools have benefited from incoming investment when they receive external funding for projects. Other options are being investigated, for example with the Shunde link in China which will become increasingly important for the regeneration agenda in Enfield.

8.3 Strong Communities

Welcoming and celebrating the cultural diversity of Enfield will give a voice to all communities to participate fully and to feel pride in their Council.

9. PERFORMANCE MANAGEMENT IMPLICATIONS

There are no performance management implications associated with this statement.

10. HEALTH AND SAFETY IMPLICATIONS

There are no Health and Safety implications associated with the Statement.

Background Papers

Statement “The Enfield Declaration on becoming a Global Borough”
“Global Learning for All: A Global Learning Policy and Strategy for Education and Children’s Services in Enfield (January 2010)

MUNICIPAL YEAR 2011/2012 REPORT NO. 130

MEETING TITLE AND DATE:

Council
9 November 2011

REPORT OF:

Chief Executive on behalf of the
Electoral Review Panel

Contact officer and telephone number:

Peter Stanyon
E mail: peter.stanyon@enfield.gov.uk

Agenda – Part: 1	Item: 10
Subject: Review of Parliamentary Polling Districts and Polling Places	
Wards: All 21 Wards	
Cabinet Member consulted: Andrew Stafford	

1. EXECUTIVE SUMMARY

- 1.1. To comply with the requirements of the Representation of the People Act 1983, the Council is required to undertake a full statutory review of all polling districts and polling places as a minimum every four years.
- 1.2. The Electoral Review Panel commenced the review on 30 June 2011 and following consideration of all representations received, agreed its final recommendations at its meeting on 11 October 2011.
- 1.3. Council is asked to approve the Panel's final recommendations for adoption with effect from 1 December 2011.

2. RECOMMENDATION

- 2.1. That the Council adopts the recommendations of the Electoral Review Panel as set out in paragraph 3.6.

3. BACKGROUND

- 3.1 The London Borough of Enfield is required to sub-divide its area into polling districts for the purposes of parliamentary elections and to designate polling places for each of those districts. In doing so, the authority must seek to ensure that all electors have reasonable facilities for voting as are practicable in the circumstances and have regard to the needs of electors who are disabled.
- 3.2 In order to satisfy the requirements of the Representation of the People Act 1983, the authority is required to complete a full statutory review of all polling districts and polling places by the end of 2011.
- 3.3 The Electoral Review Panel commenced the review on 30 June 2011 and requested the Returning Officer to make representations on existing and proposed electoral arrangements, which he did on 15 July 2011.
- 3.4 The report was (and continues to be) posted on the Council's website and was made available to the following stakeholders, who were all invited to comment by a deadline of 19 August 2011:
- All 63 Councillors
 - The three Enfield MPs
 - The Enfield and Haringey London Assembly Constituency Member
 - Election agents for the following local constituency parties and candidates:
 - ↳ British National Party
 - ↳ Christian Party
 - ↳ Conservative Party
 - ↳ English Democrats
 - ↳ Green Party
 - ↳ Labour Party
 - ↳ Liberal Democrats
 - ↳ Reform 2000 Party
 - ↳ UK Independence Party
 - ↳ Andrikos Malakounides
 - ↳ Mrs Gonul Daniels
 - The two political groups on the Council
 - The Council's Director of Education, Children's Services and Leisure
 - Enfield Association for the Blind
 - Enfield Disability Action
 - Enfield Vision
 - Royal National Institute for Deaf and Hard Hearing People (RNID)

- Scope

- 3.5 At its meeting on 8 September 2011, the Panel considered representations made by the Returning Officer and other key stakeholders. Following that meeting, the Chief Executive informed relevant stakeholders of the Panel's intentions and invited further representations.
- 3.6 The Panel then considered the further representations received and resolved to recommend to Council that:
- 3.6.1 Each polling district and the polling districts bordering it be designated as the polling place for that polling district;
- 3.6.2 On an annual basis, the Returning Officer be required to submit a schedule of proposed buildings to be used as polling stations for approval by the Electoral Review Panel;
- 3.6.3 Any amendments deemed necessary by the Returning Officer to that schedule in the intervening period be notified to the Chairman of the Panel and the Opposition Lead Member with the Returning Officer's reasons for the change;
- 3.6.4 No changes be made to the designation the polling districts as agreed by Council at its meeting on 10 November 2010;
- 3.6.5 The scheme of polling stations as set out below be approved:

Edmonton constituency

To be sub-divided into 37 polling districts, coterminous with the borough ward boundaries, as follows:

Bush Hill Park (no changes)

ZKA	Bush Hill Park Bowls, Tennis and Social Club, Abbey Road, Enfield, EN1 2QP
ZKB	Bush Hill Park Methodist Church Hall, Wellington Road, Enfield, EN1 2RS
ZKC	Edmonton Lower School, Bury Street Campus, Little Bury Street, London, N9 9HZ
ZKD	Firs Farm School, Rayleigh Road, London, N13 5QP Shared location with the YRB polling district in the Enfield Southgate constituency (Palmer's Green ward)
ZKE	Bush Hill Park United Reformed Church Hall, Main Avenue, Enfield, EN1 2RS

Edmonton Green (changes)

ZSA	Maldon Memorial Hall, Maldon Road, London, N9 9QP
ZSB	Edmonton Green Library, 36-44 South Mall, London, N9 0TN
ZSC	Faith House (Edmonton United Reformed Church), 313-319 Fore Street, London, N9 0PD
ZSD	Brettenham Infant School, Brettenham Road, London, N18 2ET Changed location from Brettenham Primary School, Brettenham Road, London N18 2ET
ZSE	St Mary's Centre, Lawrence Road, London, N18 2HN Changed location from Craig Park Youth Centre, Lawrence Road, London, 2HN
ZSF	CIS Training Centre, Montagu Road, London, N18 2NZ

Haselbury (no changes)

ZOA	Churchfield School, Latymer Road, London, N9 9PL
ZOB	Temporary Building (Latymer School), Haselbury Road, London, N9 9TN
ZOC	Hazelbury School, Haselbury Road, London, N9 9TT
ZOD	St Aldhelm's Church Hall, Windmill Hill, London, N18 1PA
ZOE	Klinger Community Hall, 40/41 Copperfield Mews, Edmonton, London, N9 7EN

Jubilee (no changes)

ZMA	Edmonton County Upper School, Great Cambridge Road, Enfield, Middlesex, EN1 1HQ
ZMB	1159 Air Training Corps Building, 58a Galliard Road, London, N9 7LS
ZMC	William Preye Centre, Houndsfield Road, London, N9 7RA
ZMD	Tramway (Edmonton) Christian Fellowship, 3-9 Tramway Avenue, London, N9 8PD
ZME	St Alphege Church Hall, Rossdale Drive, London, N9 7LG
ZMF	Mottingham Hall, Mottingham Road, London, N9 8DZ

Lower Edmonton (changes)

ZPA	St Edmund's Church Hall, Croyland Road, London, N9 7TN
ZPB	St Peter's Church Hall (Edmonton), Bounces Road, London, N9 8LE
ZPC	St Demetrios' Church Hall, Logan Road, London, N9 0LP

ZPD	The Cart Overthrown Public House, 434 Montagu Road, London, N9 0ER Changed location from Temporary Building (Zambezi Drive), Zambezi Drive/Montagu Road Junction, London, N9 0FT
-----	--

Ponders End (changes)

ZLA	Ponders End Methodist Church, Wesley Hall, 378 High Street, Enfield, Middlesex, EN3 4DG
ZLB	The Royal British Legion, 114 Nags Head Road, Enfield, Middlesex, EN3 7AP
ZLC	The Welcome Community Centre, South Street, Enfield, Middlesex, EN3 4PX
ZLD	St Matthew's Church Hall, Church Road, Enfield, Middlesex, EN3 4LA Changed location from Ponders End Working Mens Club, 46 South Street, Enfield, Middlesex, EN3 4LB
ZLE	Ponders End Library, High Street, Enfield, Middlesex, EN3 4EU

Upper Edmonton (changes)

ZUA	Wilkinson Hall, 2 nd Edmonton Scout Group, Tile Kiln Lane, London, N13 6BY Shared location with the YTD polling district in the Enfield Southgate constituency (Bowes ward)
ZUB	Wilbury Primary School, Wilbury Way, London, N18 1DE
ZUC	Temporary Building (Bridport Road Railway Bridge), Bridport Road, London, N18 1HJ
ZUD	Fore Street Library, 109-111 Fore Street, London, N18 2XF Changed location from Gallery Fore Shop, 107 Fore Street, London, N18 2XF
ZUE	Angel Raynham Children's Centre, Raynham School, Raynham Avenue, London, N18 2JQ
ZUF	St John's Church Hall, St. John's Church, Dysons Road, London, N18 2DS

Enfield North constituency

To be sub-divided into 38 polling districts, coterminous with the borough ward boundaries, as follows:

Chase (no changes)

XAA	Botany Bay Cricket Club, East Lodge Lane, Enfield, Middlesex, EN2 8AS
XAB	Brigadier Free Church, 36 Brigadier Hill, Enfield, Middlesex, EN2 0NQ
XAC	St John's C.E. School, Theobalds Park Road, Enfield, Middlesex, EN2 9BD
XAD	St Luke's Youth Centre, Morley Hill, Enfield, Middlesex, EN2 0BL
XAE	Capel Manor Primary School, Bullsmoor Lane, Enfield, Middlesex, EN1 4RL
XAF	Worcesters Primary School, Goat Lane, Enfield, Middlesex, EN1 4UF

Enfield Highway (no changes)

XHA	St Helier Hall, 12 Eastfield Road, Enfield, Middlesex, EN3 5XF
XHB	St Barnabas Hall, Addison Road, Enfield, Middlesex, EN3 5LE
XHC	St. James' CE School, Frederick Crescent, Enfield, Middlesex, EN3 7HH
XHD	Brimsdown Sports and Social Club, Goldsdown Road, Enfield, Middlesex, EN3 7QZ
XHE	27 th Enfield Scout Hut, Alma Road, Enfield, Middlesex, EN3 7HE

Enfield Lock (no changes)

XCA	Temporary Building (Park Road Flats), Park Road, Enfield, Middlesex, EN3 6LR
XCB	Totteridge Road Baptist Church Hall, Totteridge Road, Enfield, Middlesex, EN3 6NF
XCC	Kettering Hall, 67 Ordnance Road, Enfield, Middlesex, EN3 6QT
XCD	St Peter and St Paul Church Hall, Chesterfield Road, Enfield, Middlesex, EN3 6AB
XCE	Prince of Wales School, Salisbury Road, Enfield, Middlesex, EN3 6HG

XCF	Enfield Island Community Centre, 40 – 42 Island Centre Way, Enfield, Middlesex, EN3 6GS
-----	---

Highlands (no changes)

XEA	Temporary Building (Our Lady of Walsingham Church), John Gooch Drive, Enfield, Middlesex, EN2 8BT
XEB	Enfield Lawn Tennis Club, The Ridgeway, Enfield, Middlesex, EN2 8NA
XEC	St Mary Magdeline Church Hall, 97 Windmill Hill, Enfield, Middlesex, EN2 7AJ
XED	The Jolly Farmers Public House, 2 Enfield Road, Enfield, Middlesex, EN2 7QS
XEE	Temporary Building (Lonsdale Drive), Playground opposite Lindal Crescent, Lonsdale Drive, Enfield, Middlesex, EN2 7JZ

Southbury (no changes)

XGA	Carterhatch Infant School, Carterhatch Lane, Enfield, Middlesex, EN1 4JY
XGB	Suffolks Primary School, Brick Lane, Enfield, Middlesex, EN1 3PU
XGC	George Spicer Primary School, Sketty Road, Enfield, Middlesex, EN1 1YF
XGD	Fellowship Hut (Bush Hill Park Recreation Ground), Cecil Avenue, Enfield, Middlesex, EN1 4PS
XGE	John Jackson Library, Agricola Place, Enfield, Middlesex, EN1 1DW
XGF	St Mark's Hall, Millias Road, (Junction with Main Avenue) Enfield, Middlesex, EN1 1DA

Town (no changes)

XFA	Annexe Rear of Beacon of Light Church, Layard Road, Enfield, Middlesex, EN1 4BA
XFB	Chace Community School, Churchbury Lane, Enfield, Middlesex, EN1 3HQ
XFC	St Andrew's CE School, 116 Churchbury Lane, Enfield, Middlesex, EN1 3UL
XFD	St Andrew's Church Hall, Silver Street, Enfield, Middlesex, EN1 3EG
XFE	4 th Enfield Scout Headquarters, Gordon Road, Enfield, Middlesex, EN2 0QA
XFF	St Michael and All Angels Parish Hall, Gordon Hill, Enfield, Middlesex, EN2 0QP

Turkey Street (no changes)

XBA	Lea Valley High School, Bullsmoor Lane, Enfield, Middlesex, EN3 6TW
XBB	Kempe Hall, Kempe Road, Enfield, Middlesex, EN1 4QS
XBC	Freezywater St George's Primary School, Hertford Road, Enfield, Middlesex, EN3 6NR
XBD	The Dharma Centre, 444 Hertford Road, Enfield, Middlesex, EN3 5HQ

Enfield Southgate constituency

To be sub-divided into 35 polling districts, coterminous with the borough ward boundaries, as follows:

Bowes (no changes)

YTA	Bowes Primary School, Bowes Road, New Southgate, London, N11 2HL
YTB	Trinity at Bowes Methodist Church Hall, Entrance in Sydney Avenue, London, N22 8RA
YTC	Tottenham Infants School, Tottenham Road, London, N13 6HX
YTD	Wilkinson Hall, 2 nd Edmonton Scout Group, Tile Kiln Lane, London, N13 6BY Shared location with the ZUA polling district in the Edmonton constituency (Upper Edmonton ward)

Cockfosters (no changes)

YDA	St Paul's Church Hall, Crescent East, Hadley Wood, Barnet, Hertfordshire, EN4 0EN
YDB	Southgate Compton Cricket Club, Chalk Lane, Cockfosters, Barnet, EN4 9JG
YDC	Freston Hall, Freston Gardens, Cockfosters, Barnet, Hertfordshire, EN4 9LX
YDD	14 th Southgate Scout Headquarters, Green Road, London, N14 4AP
YDE	St Thomas Church, Prince George Avenue, London, N14 4SN

Grange (no changes)

YJA	The Formont Centre, Waverley Road, Enfield, Middlesex, EN2 7BO
YJB	The Dugdale Centre, Thomas Hardy House, 39 London Road, Enfield, Middlesex, EN2 6DS

YJC	St Peters Church Hall (Winchmore Hill), Vera Avenue, London, N21 1DN
YJD	Grange Park Methodist Church Hall, Park Drive, London, N21 2EU
YJE	St Stephens Hall, Park Avenue, Enfield, Middlesex, EN1 2HL
YJF	Ridge Avenue Library, Ridge Avenue, London, N21 2RH

Palmers Green (changes)

YRA	The Broomfield Club, 85a Hedge Lane, London, N13 5SZ
YRB	Firs Farm School, Rayleigh Road, London, N13 5QP Shared location with the ZKD polling district in the Edmonton constituency (Bush Hill Park ward)
YRC	Mayfield Athletic Club, Kenmare Gardens, London, N13 5DR
YRD	Hazelwood Junior School, Hazelwood Lane, London, N13 5HE
YRE	Palmers Green Library, Broomfield Lane, London, N13 4EY Shared location with the YQC polling district in the Enfield Southgate constituency (Southgate Green ward)

Southgate (no changes)

YIA	Highlands Village Hall, 5 Florey Square, Highlands Village, London, N21 1UJ
YIB	Eversley School, Chaseville Park Road, London, N21 1PD
YIC	Southgate District Scout Headquarters, Redwood Close, London, N14 6HW
YIE	Bourne Methodist Church Hall, The Bourne, London, N14 6RS
YIF	St Andrews Parish Hall, Chase Side, London, N14 5PP

Southgate Green (changes)

YQA	St Monica's Scout and Guide Headquarters, Cannon Road, London, N14 7HE
YQB	Walker Primary School, Waterfall Road, London, N14 7HE
YQC	Palmers Green Library, Broomfield Lane, London, N13 4EY Changed location from Temporary Building (Broomfield Park), Adjacent to Broomfield House, Broomfield Park, London, N13 4HB and now a shared location with the YRE polling district in the Enfield Southgate constituency (Palmers Green ward)
YQD	Bowes Road Library, Ground Floor Meeting Room, Bowes Road, London, N11 1BD

YQE	St. Paul's Church Hall (Southgate), Woodland Road, London, N11 1PN
-----	--

Winchmore Hill (no changes)

YNA	St Paul's C.E. Primary School, Ringwood Way, London, N21 2RA
YNB	Friends Meeting House, Church Hill, London, N21 1LE
YNC	Palmers Green United Reformed Church, Entrance in Fox Lane, London, N13 4AL
YND	Winchmore Hill Methodist Church Hall, Green Lanes, London, N13 4EP
YNE	Holy Trinity Church Hall, Entrance in Queens Avenue, London, N21 3JE

- 3.6.6 That the reason Council has approved the scheme is that after detailed evaluation by the Electoral Review Panel and key stakeholders, it considers that the needs of electors are best met by the submission as proposed.

4. ALTERNATIVE OPTIONS CONSIDERED

As the Council must undertake a full statutory review of all polling districts and polling places by the end of 2011 in accordance with the provisions of the Representation of the People Act 1983 and the Review of Polling Districts and Polling Places (Parliamentary Elections) Regulations 2006, no alternative options apply.

5. REASONS FOR RECOMMENDATIONS

To seek the Panel's agreement to its final recommendations in order that a report may be submitted to Council on 9 November 2011 for adoption.

6. COMMENTS OF THE DIRECTOR OF FINANCE RESOURCES AND CUSTOMER SERVICES AND OTHER DEPARTMENTS

6.1 Financial Implications

Additional costs will be incurred in the administration of elections if the Council decides to designate additional polling districts and associated polling places and/or temporary buildings. Conversely, costs savings will be accrued if polling districts are merged and/or fewer polling stations utilised.

6.2 Legal Implications

The Council is required by the Representation of the People Act 1983 ("the 1983 Act") to divide its area into polling districts for the purposes of parliamentary elections, to keep those polling districts under review and to undertake a full statutory review as a minimum every four years as amended by Part 4 of the Electoral Administration Act 2006 ("the 2006 Act"). The Council must ensure that all the electors in the constituency have reasonable

facilities for voting and take account of the access needs of all electors and in particular, so far as is reasonable and practicable every polling place for which a Council is responsible must be accessible to electors who are disabled. Failure to comply could lead to the Council being in breach of its official duty.

Under the Equality Act 2010, service providers are legally obliged to make any adjustment that it is reasonable for them to make to their procedures and premises to help disabled people to access services. This legislation covers polling stations.

In carrying out its review, as set out in the body of the report, the 2006 Act and the Review of Polling Districts and Polling Places (Parliamentary Elections) Regulations 2006 require the Council to obtain and publish the representations of the returning officer and seek representations from representatives of disabled groups.

7. KEY RISKS

Poor designation of polling districts and polling places could have an adverse effect on the administration of future elections, directly impacting on the electorate.

8. IMPACT ON COUNCIL PRIORITIES

8.1 Fairness for All

In designating polling districts and polling places, the Council must ensure that all the electors in the constituency have reasonable facilities for voting.

8.2 Growth and Sustainability

The designation of accessible polling districts and polling places ensures that the views of electors on issues such as growth and sustainability can be properly heard at elections through the voting process.

8.3 Strong Communities

The designation of accessible polling districts and polling places ensures that communities are able to participate in the democratic process through voting and that the reasonable needs of the electorate are adequately provided for.

9. PERFORMANCE MANAGEMENT IMPLICATIONS

The designation of appropriate polling districts and polling places will assist the Returning Officer in continuing to deliver high quality electoral services across the borough.

Background papers:

Representation of the People Act 1983

Review of Polling Districts and Polling Places (Parliamentary Elections) Regulations 2006

Report and minutes of the Electoral Review Panel – 22 June 2011

Report and minutes of the Electoral Review Panel – 8 September 2011

Report and minutes of the Electoral Review Panel – 11 October 2011

First Report of the Parliamentary Returning Officer on the 2011 Review of
Parliamentary Polling Districts and Polling Places

Various representations made to the First Report of the Parliamentary Returning
Officer on the 2011 Review of Parliamentary Polling Districts and Polling Places

Subsequent representations made on the Electoral Review Panel's proposals

MUNICIPAL YEAR 2011/2012 REPORT NO. 131

MEETING TITLE AND DATE:

Council
9 November 2011

REPORT OF:

Chief Executive on behalf of the
Electoral Review Panel

Contact officer and telephone number:

Peter Stanyon
E mail: peter.stanyon@enfield.gov.uk

Agenda – Part: 1	Item: 11
Subject: Review of Parliamentary Constituency Boundaries	
Wards: All 21 Wards	
Cabinet Member consulted: Andrew Stafford	

1. EXECUTIVE SUMMARY

- 1.1. The Boundary Commission for England published its initial proposals for the review of parliamentary constituency boundaries on 13 September 2011.
- 1.2. The Electoral Review Panel considered the effect of the initial proposals on Enfield at its meeting on 11 October 2011 and agreed that Council be recommended to make representations to the Boundary Commission setting out the Borough's general objections to the initial proposals.

2. RECOMMENDATION

- 2.1. That Council considers whether the representations set out at paragraph 3.6.1 should be submitted to the Boundary Commission for England

3. BACKGROUND

- 3.1 At its meeting on 11 October 2011, the Electoral Review Panel was advised that the Parliamentary Voting System and Constituencies Act 2011, which was passed in February 2011, required the Boundary Commission for England to conduct a review of parliamentary boundaries in England and to make recommendations to Government by October 2013.
- 3.2 It was further noted that the Commission had published its initial proposals on 13 September 2011 which, if enacted, would have the effect of Enfield being served by 5 Members of Parliament, rather than the current 3, in the Enfield North, Enfield Southgate, Chingford and Edmonton, Hornsey and Wood Green and Tottenham constituencies.
- 3.3 The Panel debated at length the impact the proposals would have on the Borough and considered what representations Council might be invited to make to the Commission. Issues such as challenging the sectorisation of London into three distinct areas, the placement of Enfield in the North East London sub-region, the tenuous nature of the A406 North Circular Road being the link between Edmonton and Chingford to the east and the breaking of local ties were all considered.
- 3.4 The Panel unanimously agreed that the initial proposals were not in the best interests of Enfield but reluctantly accepted that the task of coming up with alternative proposals to present to the Commission would be an extremely difficult task taking into account the parameters set by the Parliamentary Voting System and Constituencies Act 2011 and the potential that any alternative schemes might then not be in the interests of all interested parties, and also having a knock-on effect to neighbouring boroughs.
- 3.5 The Panel resolved that officers liaise with all members of the Panel and those present at this meeting in agreeing a form of wording to be presented to Council at its meeting on 9 November 2011 recommending that representations be made to the Boundary Commission for England setting out the Borough's general objections to the initial proposals.
- 3.6 Following that consultation process, Council is asked to consider whether the following representations should be made to the Boundary Commission:
- 3.6.1 "The London Borough of Enfield notes the initial proposals made by the Boundary Commission for England for the review of parliamentary constituency boundaries, which were published on 13 September 2011.

The Council further notes that the Commission must conduct the review in accordance with the provisions of the Parliamentary Voting System and Constituencies Act 2011, which requires that each constituency must contain between 72,810 and 80, 473 parliamentary electors.

However, the Council and representatives of a number of local political parties agree that the initial proposals are not in the best interests of the

people of Enfield and its surrounding area, and should therefore be re-considered.

In making this statement, the Council does not consider it is able to offer specific alternative proposals because it does not have the specialist resources available to it to undertake such complex re-calculations, which the Commission does, and even if it did, the necessary political independence of the review might be compromised.

Notwithstanding these points, the Council urges the Boundary Commission to re-consider its initial proposals for the following reasons:

- We believe that Enfield should have been placed in the London North West sub-region, not in the London North East sub-region, particularly as the bulk of the Borough is to the west of the River Lee, which the Commission has considered as a geographical barrier in its considerations.
- We do not believe that sufficient consideration has been given to the geographical nature of the area. The proposed Chingford and Edmonton constituency crosses the King George V reservoir, which is a significant geographical barrier. The reason given in the report that “the North Circular road provided a suitable link between Edmonton ... and Chingford” is tenuous as access off that road between the two areas is extremely poor.
- No consideration has been given to the demographics of the area; the demography of Edmonton is completely different to that in Chingford (reinforced by the geographical barrier of the King George V reservoir), which therefore creates a completely artificial constituency.
- The argument is made in the report that “We decided ... that we would not cross the River Lee between Tower Hamlets and Newham [and] rejected crossing between either Hackney or Haringey and Waltham Forest”. No justification is given for this decision and we would contend that crossing the River Lee further south would create more socially cohesive constituencies than the artificial one proposed for Chingford and Edmonton.
- The Borough regrets that the historical tie of Edmonton to Enfield will be irreparably severed, creating significant administrative issues for the Borough Council. For example, the proposed Meridian Water development in the east of Enfield, which is a major priority for the Borough Council, will fall within two parliamentary constituencies (Chingford and Edmonton and Tottenham) neither of which will be seen to be a constituency primarily serving the constituents of Enfield.

The London Borough of Enfield therefore urges the Boundary Commission for England to re-consider its initial proposals in light of the statements made above in order to better reflect the needs of the local area and which will result in three Enfield-focussed constituencies.”

4. ALTERNATIVE OPTIONS CONSIDERED

The Council is not obliged to make representations to the Boundary Commission but the Commission has published its initial proposals for consultation by all interested parties.

5. REASONS FOR RECOMMENDATIONS

To determine whether Council should be recommended to make representations to the BCE.

6. COMMENTS OF THE DIRECTOR OF FINANCE RESOURCES AND CUSTOMER SERVICES AND OTHER DEPARTMENTS

a) Financial Implications

There are no direct financial implications other than Officer time in the preparation of supporting information.

b) Legal Implications

The Boundary Commission must undertake its review of parliamentary constituency boundaries in accordance with the provisions of the Parliamentary Voting System and Constituencies Act 2011, including taking into account representations made by interested parties. Rule 5 in Schedule 2 requires the Boundary Commission to take into account when drawing up proposal for new constituencies “any local ties that would be broken by changes in constituencies”.

7. KEY RISKS

The re-designation of parliamentary constituency boundaries will have an effect on the relationship of MPs with the Council. At present, 3 MPs have a direct interest in the Borough; the Commission’s initial proposals will increase this representation to 5, 3 of whom will also have an interest in neighbouring local authority areas.

8. IMPACT ON COUNCIL PRIORITIES

8.1 Fairness for All

To ensure fairness for all, appropriate democratic representation is required at all levels.

8.2 Growth and Sustainability

To generate growth and sustainability, appropriate democratic representation at all levels is required.

8.3 Strong Communities

The development and maintenance of strong communities is enhanced by effective democratic representation at all levels..

9. PERFORMANCE MANAGEMENT IMPLICATIONS

The designation of effective and appropriate parliamentary constituency boundaries assists the local authority in continuing to deliver high quality services across the borough.

Background papers:

Boundary Commission for England's initial proposals for the review of parliamentary constituency boundaries published on 13 September 2011

Parliamentary Voting System and Constituencies Act 2011

Report to and minutes of the meeting of the Electoral Review Panel, 11 October 2011

This page is intentionally left blank

MUNICIPAL YEAR 2011/2012 REPORT NO. **132**

MEETING TITLE AND DATE:

Council – 9 November
2011

REPORT OF:

Director of Finance,
Resources and Customer
Services

Agenda – Part: 1**Item: 12****Subject:**

Proposed changes to the Council's
Constitution

Wards: Not Ward specific**Cabinet Member consulted:**

Councillor Taylor

Contact officer and telephone number:

Peter Stanyon

E mail: peter.stanyon@enfield.gov.uk 020 8379 8580

1. EXECUTIVE SUMMARY

This report sets out proposed changes to the Council's Constitution agreed by the Governance Review Group (GRG) at their meeting on 17 October 2011. The issues considered by GRG and the recommendations to Council are highlighted below.

2. RECOMMENDATIONS

2.1 To approve the following changes to the Rules of Debate at Council Meetings in the Council's Constitution:

- (a) When a member may speak again (Paragraph 12.6 in Chapter 4.1 of the Constitution – Page 4-12) amend to include as (h) under para 12.6: "to allow the mover of an amendment to also have a right to sum up. Such speeches to be limited to three minutes."
- (b) Points of order and personal explanation (Paragraphs 12.13 & 12.14 in Chapter 4.1 of the Constitution – Page 4-15) – amend to only allow points of information and personal explanation to be made at the end of a speech with the relevant paragraphs amended to read:
 - Para 12.13 Point of Order – "A member may only raise a point of order at the end of the speech to which it relates. A point of order may only relate to an alleged breach of these Council Rules of Procedure or the law. The member must indicate the rule or law and the way in which he/she considers it has been broken. The members speech will be limited to one minute, with any additional time to be agreed at the discretion of the Mayor. The ruling of the Mayor on the matter will be final."
 - Para 12.14 Personal explanation – "A member may only make a point of personal explanation at the end of the speech which it relates. A personal explanation may only relate to some material part of an earlier speech by the member which may appear to have been misunderstood in the present debate."

2. RECOMMENDATIONS (continued)

The members speech will be limited to one minute, with any additional time to be agreed at the discretion of the Mayor. The ruling of the Mayor on the admissibility of a personal explanation will be final.”

- (c) Time limit of members speeches (Paragraph 12.5 in Chapter 4.1 of the Constitution – Page 4-12) – to extend this provision so that the time limit of ten minutes to introduce an item and 5 minutes on other occasions be extended to all committee meetings. Any additional time would be at the discretion of the Committee Chair, with the following provision to be included within Chapters 4.2 (Scrutiny Procedure Rules) and 4.5 (Operating rules for Committees) – Content/length of speeches:

“Speeches must be directed to the question under discussion. The time limit for a speech to introduce an item should be no longer than 10 minutes with a 5 minute time limit in all other instances, with any additional time required being at the discretion of the Committee Chair.”

Please note this will not apply to Council meetings.

- 2.2 To approve the revised Terms of Reference and change in name for the Governance Review Group to the Members & Democratic Services Group (as detailed in section 3.3 of the report).
- 2.3 To agree the inclusion (as detailed in section 3.5 of the report) of substitute arrangements for membership of the Overview & Scrutiny Committee so that if a member of the Committee cannot attend a particular meeting, a substitute may attend in their place.

3. BACKGROUND

- 3.1 At its meeting on 17 October 2011, the Governance Review Group were asked to consider a number of suggested changes to the rules of debate at Council and other meetings.
- 3.2 The key issues considered included changes affecting:
- When a member can speak again during debates on motions at Council, when an amendment has been moved.
 - When members should be allowed to raise points of order or personal explanation during debates at Council, in order to avoid disrupting a speaker as they are addressing the meeting.

- Extending the rules providing a time limit for speakers to bodies such as Overview & Scrutiny Committee, Scrutiny Panels and Planning Committee. Whilst it was felt that a time limit would be appropriate in most cases, the Group did recognise that the technical explanation of some issues being considered at Committees may require more time, in which case it was felt that the Chair should have discretion to allow a longer period.

3.3 In addition the Group was asked to review its terms of reference and name in order to reflect both its current and future role. As a result it was agreed to recommend a change in name for the Group from the Governance Review Group to the Members & Democratic Services Group and to recommend to Council that the following revised Terms of Reference be approved:

- (1) To oversee and monitor the Council's democratic processes and arrangements and the implementation of related parts of the Constitution.
- (2) To consider issues and develop proposals relating to all aspects of Members' support, including:
 - administrative and ICT support
 - members' enquiries
 - members' wellbeing and office accommodation support
 - training and development
 - members' allowances.
- (3) To make recommendations to full Council where appropriate.

3.4 The Group (at their meeting on 1 September 2011) also considered the appointment of substitute members for the Overview & Scrutiny Committee (OSC). The Committee is made up of a Chair and 6 members, who chair the six Scrutiny Panels (4 from the Majority Group and 2 from the Opposition Group). The issue was raised in the light of the increased frequency of call-in meetings and short time periods involved in their arrangement, which often made it difficult for all members of the Committee to attend. The concept of using substitute members on OSC was supported by both Groups.

3.5 It is therefore proposed that substitutes be allowed^[TRMS1], with the following provision included within Paragraph 3 of Chapter 4.2 (Page 4-26) of the Constitution:

"The use of substitute members will be permitted for Overview and Scrutiny Committee in the following circumstances:

- (a) to take the place of the ordinary members of the Overview and Scrutiny Committee where the member will^[TRMS2] be absent for the whole of the meeting. Such an appointment shall apply for the

entire meeting, including where the meeting is reconvened after an adjournment; or

- (b) where a member of the Overview and Scrutiny Committee has signed a call in request to be determined by the Committee, or has a prejudicial interest, and so cannot take part in the decision making. In this case a member may be appointed to act as a substitute but such an appointment will only apply to consideration of that agenda item.

The member who wishes to appoint a substitute must notify the Head of Corporate Scrutiny & Outreach in writing, prior to the commencement of the meeting of the intended substitution. The appointment of the substitution will be reported to the meeting at the commencement of business. Once notification of a substitute member has been received under (a) above (unless it is withdrawn prior to the commencement of the meeting) the appointed member of the relevant committee or sub-committee shall not be entitled to attend the relevant meeting as a member of the committee.”

4. ALTERNATIVE OPTIONS CONSIDERED

To leave the rule of procedure, Terms of Reference and name of the Group as they are at present or to vary them in some other way, and not to allow OSC substitutions.

5. REASONS FOR RECOMMENDATIONS

To agree recommended changes to the Constitution.

6. COMMENTS OF THE DIRECTOR OF FINANCE RESOURCES AND CUSTOMER SERVICES & OTHER DEPARTMENTS

6.1 Financial Implications

There are no financial implications.

6.2 Legal Implications

The Constitution sets out how the Council operates within legal requirements.

It is necessary to review the documents periodically to reflect changes in circumstances or to introduce more effective working practices as evidenced in the recommendations.

The rules governing the meetings of local authorities and committees are found mainly in s. 99 and Part 1 Schedule 12 of Local Government Act 1972 (LGA 1972) as amended. The rules are also found in the Constitution of a local authority.

The report sets out proposed changes to the Council's rules of debate. The Council's constitution contains its rules of debate and other procedural matters in respect of which there are no specific statutory provisions. Pursuant to s. 106 (in relation to standing orders for committees and sub-committees) of LGA 1972 and Schedule 12 para 42 of LGA 1972 a Council may make standing orders to regulate its proceedings and business and may vary or revoke them.

A standing order is in principle open to challenge if it goes beyond regulation or business or is contrary to the policy and objects of LGA 1972 for example if it inhibited the democratic process.

7. KEY RISKS

No material risks identified.

8. IMPACT ON COUNCIL PRIORITIES

8.1 Fairness for All

The Constitution ensures that fair rules of debate are operated.

8.2 Growth and Sustainability

An effective Constitution ensures that the priorities of growth and sustainability can be fairly and properly debated.

8.3 Strong Communities

An effective Constitution ensures that the priority of developing strong communities can be fairly and properly debated.

9. PERFORMANCE MANAGEMENT IMPLICATIONS

The Constitution ensures that fair rules of debate are operated and that the Council operates to high standard of performance.

This page is intentionally left blank

COUNCILLORS' QUESTIONS: 9 November 2011**Question 1 from Councillor Laban to Councillor Orhan the Cabinet Member for Children & Young People**

Please would the Cabinet Member for Children & Young People inform the council which 9 primary schools have not met their floor targets and what strategies her department are going to deploy to improve the situation?

Reply from Councillor Orhan

"Is Councillor Laban referring to schools below the floor targets in 2010 or 2011? Of course she will be aware that the criteria and targets used for 2010 and 2011 have been altered by DfE.

If she can clarify I will be happy to write to her with details."

Question 2 from Councillor Robinson to Councillor Taylor, Leader of the Council

Could the Leader report on his meeting with Bob Neill MP?

Reply from Councillor Taylor

"Councillors Stafford and Lavender, the Chief Executive and Director of Finance, Customer Services and Resources accompanied me to meet the Minister. I think we were able to reinforce our case but we were left with no promises or assurances. I have invited the Minister to come to Enfield as I believe we have a good case to put. I thank Councillor Lavender for his support on this matter and I think we can all agree that a damping of £15 million this year and £8 million for each of the next 6 years is grossly unfair."

Question 3 from Councillor Laban to Councillor Orhan the Cabinet Member for Children & Young People

Please would the Cabinet Member for Children's Services & Young People explain why Southgate Town Hall, is not suitable as a Free School when she was quite prepared to educate children in the former Argos Store in Edmonton?

Reply from Councillor Orhan

"Our 10 year strategy for the provision of additional primary school places seeks to provide additional places principally through the development of partner schools hosted by

existing primary schools. This flexible strategy aims to provide school places close to children's homes. In most cases partner schools are being developed on existing school sites. In the case of Edmonton Green we were unable to identify options for an on-site partner school and therefore needed to seek an off-site option in the area: this was the context in which I authorised work to secure the former Argos Store. The sites are less constrained in the Palmers Green area and on-site partner schools are likely to be the preferred way forward. None of the 2 proposed Free Schools identified in question 21 are planned for the Palmers Green area.”

Question 4 from Councillor Levy to Councillor Bond, Cabinet Member for Environment

Can the Cabinet Member list the awards the Environment Department has been awarded in the past 12 months?

Reply from Councillor Bond

“Waste Street Scene & Parks

Waste Services has been shortlisted for Chartered Institute of Waste Management Health and Safety Award and is a finalist.

At the London in Bloom Awards 2011 ceremony held at City Hall our parks received the following Awards.

Parks Large category 2011

Oakwood Park	Gold
Grovelands Park	Gold
Pymmes Park	Silver Gilt
Jubilee Park	Silver Gilt
Enfield Town Park	Silver Gilt

Country Park

Forty Hall	Silver Gilt
------------	-------------

Enfield in Bloom 2011

Pymmes Park	Gold
Broomfield	Silver Gilt
Durants Park	Silver Gilt

Country Park

Forty Hall	Silver Gilt
------------	-------------

At the London in Bloom Awards 2010 ceremony held at City Hall our parks received the following Awards.

Oakwood Park	Gold
Grovelands Park	Gold

Forty Hall	Gold
Pymmes Park	Gold
Jubilee Park	Silver Gilt
Enfield Town Park	Silver Gilt

Mayor of London Safer Parks Awards 2011

Bury Lodge Gardens Gold
Bush Hill Park Silver

Planning & Environmental Protection

Sword of Honour - Enfield is the only local authority ever to receive this award. The British Safety Council Sword of Honour represents the pinnacle of achievement in the world of health and safety management. Firstly, an organisation must have achieved five stars in their five star health and safety management audit. They then have the opportunity to go on to prove they are among the 'best of the best' to an independent adjudicator.

London Planning Awards 2010/2011 – Best Built Project awarded to LBE and Sheppard Epstein Hunter Architects – sponsored by CBRE CB Richards Ellis – for the Enfield Library.

Cutting Carbon Emissions – Public Sector Carbon Management Programme – given in recognition and appreciation of our organisation's work in reducing emissions, cutting costs and the mitigation of climate change during 2010.

Highways

Four of the Council's Car Parks have received the British Parking Association Park Mark award. They are: Crown Road, Minchenden Road, Lodge Drive and Palace Gardens. The Park Mark® Safer Parking Scheme is an initiative of the Associations of Chief Police Officers (ACPO/S) and is aimed at reducing both crime and the fear of crime in parking facilities.

Community Safety

We became the first borough in London to be given White Ribbon status, which recognises our commitment to tackling domestic violence in Enfield. This was highlighted to Kit Malthouse and five other London boroughs have now received this status.

Our Safe as Houses burglary reduction project has won the London regional Problem Solving awards. It was also recognised as best practice at the prestigious international Goldstein problem solving awards and has just been nominated for a certificate of merit at the national Tilley problems solving awards.

Our Gangs Action Group, which works to identify and tackle gangs in

Enfield has been recognised as best practice by the Met Police and Home Office. This was also recognised as best practice at the international Goldstein problem solving awards held in Florida recently.

Department

The Council Annual Staff Awards were held on Friday 23 September at Millfield Theatre and the following winners were from Environment.

- Marc Gifford and John Daffada in the individual awards.
- Community Safety Team in the team awards
- Street Scene in the Respect for Enfield awards

I would like to thank Councillor Levy for giving me this opportunity to thank all Members of staff who have contributed to all these awards gained by Environment in the last 12 months given that we are under the cosh by Central government.”

Question 5 from Councillor Lamprecht to Councillor Orhan the Cabinet Member for Children & Young People

“On 14th July this year the Enfield Independent quoted a spokesman for the Council saying “the need for school places is required for Edmonton, parts of Enfield Town and the north east of the borough, not Palmers Green”. In the light of this public statement, would Councillor Orhan please explain why her department has approached Walker School (in the south east of the borough where there are allegedly no shortage of school places) to explore the possibility of an expansion when this was previously ruled out by the department?”

Reply from Councillor Orhan

“I can confirm that the increased demand for primary school places has been felt most acutely in Edmonton, parts of Enfield Town and the North East of the Borough. Increased demand has not however been restricted to these areas of the Borough. I am planning to make proposals to the December meeting of Cabinet setting out proposals for the establishment of additional reception classes in September 2012 in order that there are sufficient school places for local children throughout the Borough.”

Question 6 from Councillor Uzoanya to Councillor Hamilton, Cabinet Member for Community Wellbeing and Public Health

What is this Council doing to combat knife crime?

Reply from Councillor Hamilton

The Council’s Community Safety Team, the Youth Offending and Youth

Support Services and many other council officers contribute to the ongoing work to deter people from carrying knives.

The Safer and Stronger Communities Board current Partnership Plan has "Tackling Serious Youth Violence " as its number one priority and this is often linked with offences of carrying knives. (SYV is reduced by 10.1% in Enfield as compared with 10.6% increase)

Recent feedback to the Crime and Safety Scrutiny Panel demonstrated that:

- The Cross Border Gangs Action Group is an area of best practice carrying extensive work with individual identified offenders.
- We were one of the first areas nationally to use Gangs Injunctions and the offender (Dylan Martin) will be sentenced to at least 14 months if found guilty of breaching the injunction.
- Enfield currently has the second lowest rate of personal robbery in the Metropolitan Police area (as per 23rd Oct 2011) and rates for knife crime in Enfield are reduced by 5.6% as compared with a 15.2% increase across London. This of course does not reflect the impact of the tragic loss of 3 lives on the streets of Enfield (Negus Mclean, Leroy James and Steven Grisales).

We have recently successfully applied for additional funding and our Communities Against Guns Gangs and Knives programme includes:

- Enhancing local mentoring schemes
- Providing additional support for gang members who wish to exit gangs.
- Providing information about "Safer Choices" for young women who may be involved with gangs or gang members.
- Provision of metal detectors for use in schools, on housing estates and in parks.
- Funding for additional Youth Outreach work, which is now tasked via SAFE (fortnightly partnership tasking).
- Provision of positive activities for both young people and adult prolific offenders

We are also in the process of developing a "Gangs Call In" based on the successful Glasgow model, where the consequences of criminal activity committed by gangs is made clear. The community will play a critical role in this as the process is finalised and the "Call In" delivered. We anticipate that this will be ready in early 2012.

We are working with partners to design out the opportunity for all types of crime on estates such as at Lytchett Way, where physical improvements to the area will be supplemented by the installation of CCTV.

We have commissioned Victim Support to help us develop a programme which helps young people exit gangs and provides support for young victims of crime.

The Youth Offending Service are leading on the delivery of a Knife Crime Prevention Programme and additional work to make offenders understand the impact of crime on their victims, many of whom are also young people. Young Offenders are taught first aid and there is group training on weapons awareness and the fact that there is no safe place on the body to use a knife. Youth Inclusion Support Panel clients are taken on prison visits to deter offending.

We are seeking to increase the level of CCTV in crime hotspots and also trying to maximise the opportunities to link up other CCTV systems with the facility at Claverings.

We have already linked St Modwens Shopping Centre and are in the process of linking Enfield Town and the transport Hub at Edmonton Green with the Council's CCTV Centre.

Trading Standards Officers carry out intelligence led test purchases of knives being sold to people under the age of 16 (as the law requires) and we are also working with legitimate traders to ensure the safe sales and storage of knives.

We support the Junior Citizens programme targeting all local schools and work with the schools teams to promote preventative work to deter robberies of school children and other serious offences.

We have purchased body worn cameras for police teams working on estates and have also purchased body cams for the environment enforcement officers.

This list only represents some of the specific activity to counter knife crime, but there are many other examples of commissioning positive activity and youth diversion projects which will equally have a massive impact on street crimes including those perpetrated with a knife.

At the recent SAFE Tasking meeting (28/10/11) it was reported that in Upper Edmonton, which was one of only two areas where Youth Crime has shown an increase this year (the other is Highlands +2 offences), it found that this was due to increased proactive patrols by police. Within the "violence" category of Youth Crime, actual incidents of violence have been reduced, but incidents where the police have stopped and searched people and knives have been recovered has increased.

Question 7 from Councillor Lamprecht to Councillor Orhan the Cabinet Member for Children & Young People

Will Councillor Orhan provide the council with an up to date written report on feeding circles for primary school provision in the south east of the borough?

Reply from Councillor Orhan

"I am unsure of which schools Councillor Lamprecht is interested in – if he were to clarify this, I would be most willing to let him have the up to date details".

Question 8 from Councillor Cole to Councillor Goddard, Cabinet Member for Business and Regeneration

What plans did the Council have for the future of Southgate Town Hall and the Library on that site prior to May 2010?

Reply from Councillor Goddard

"The intention for the site is for an improved library, the provision of much needed community facilities on the library site, the opportunity for a health facility should that be confirmed by local GPs and the provision of much needed housing on the Town Hall site with the retention of the external appearance. This is in line with the intentions of the previous administration.

The principal of establishing an alternative use for the town hall, and cross-funding the refurbishment of the library via the sale of the town hall, was first established under the previous administration in the North Circular Area Action Plan: Preferred Options Report 2008 (paragraphs 2.3.17 and 2.3.27). In addition the Core Strategy (2010) Core Policy 44 sets out the need to deliver improved library facilities in Palmers Green."

Question 9 from Councillor Laban to Councillor Orhan the Cabinet Member for Children & Young People

"Why does the Cabinet Member for Children's Services & Young People oppose setting up a Free School at Southgate Town Hall when her department has to bus children from nearby Bowes Primary School all the way over to a makeshift facility in Nightingale Road, Edmonton?"

Reply from Councillor Orhan

"I am not aware of any current proposals for a free school in Palmers Green. I can however confirm that the education provision at Bowes at

Edmonton in Nightingale Road is of high quality. Our innovative use of the former Delta City Learning Centre is providing good accommodation for 90 children”

Question 10 from Councillor Robinson to Councillor Goddard, Cabinet Member for Business and Regeneration

What are the trends in unemployment in the borough?

Reply from Councillor Goddard

“The latest information from Job Centre Plus (JCP) shows 10,358 JSA claimants in August 2011; 5.4% of the working age population (191,200). Overall trends in unemployment include -

- An increase of 162 (1.6%) on claimant figures for July 2011
- An increase of 1,271 (14.0%) on claimant figures for August 2010
- An increase of 165 people among the age band '18-24 years' to 2,760 (27% of all JSA claimants)

We are very concerned about the high youth unemployment and the overall rise.

Enfield Council's ability to respond this increasing challenge is now very limited. However, we have established a Job Brokerage Board and an Apprenticeship Board, which brings together local stakeholders, businesses and training bodies to address demand and supply gaps and support those seeking work.”

Question 11 from Councillor Maynard to Councillor Orhan the Cabinet Member for Children & Young People

“The Council has proposed that Worcesters School becomes a partner school, accepting an additional class each year from 2012 to 2014. Can Councillor Orhan give a cast-iron guarantee that any such expansion will be temporary and come to an end in 2014?”

Reply from Councillor Orhan

“I can confirm that we are discussing proposals for a partner school which would admit an additional reception class each year from 2012 to 2014. We have no current plans to publish a statutory notice for the permanent expansion of the school.”

Question 12 from Councillor Ibrahim to Councillor Bond, Cabinet Member for Environment.

“What, if any, plans exist for fortnightly bin collections?”

Reply from Councillor Bond

“There are no plans to introduce a fortnightly waste collection service for any of the waste streams.

There never were any such proposals even though Tory leaflets announced this was going to happen under this administration.

Having reviewed Eric Pickles statement and guidance from the DCLG, under the Weekly Collection Support Scheme, which is due to begin in April 2012, the Council will be able to bid for funding, individually or in a consortium with other Councils for funding, providing it guarantees weekly collections for five years or more, and at the same time demonstrate improvements in recycling and procurement.

There will be no obligation on the Council to bid for the funding and return to weekly collections. The proposals have been introduced to reduce the financial incentives of fortnightly collections and encourage Councils to launch incentives to increase recycling in its areas. Eric Pickles and the DCLG have reiterated that the purpose the new funding is to enable councils to look at other alternatives which will still achieve savings in public procurement and increased recycling rates, and at the same time satisfy the public’s wishes that household waste collections services should be weekly, particularly for the collection of food waste. Therefore each council will need to undertake an exercise to determine whether they wish to apply for funding, by taking into account the views and wishes of those in its area and whether it is cost effective to return to weekly collections.

Specific details for the Scheme and the bidding process have not yet been released by the DCLG, however the website does state that details will be set out in due course. Once these have been released we will be in a better position to advise of the specific impact on Enfield. In the meantime it may be prudent to get the views of our neighbouring authorities, especially with regards to setting up a consortium for a shared service and bidding for funding.”

Question 13 from Councillor Maynard to Councillor Orhan the Cabinet Member for Children & Young People

“The Council has proposed that Worcesters School becomes a partner school, accepting an additional class each year from 2010 to 2014. An increase in pupils at Worcesters School will have a significant impact on traffic in the area. A traffic study was completed in the spring of 2010. Can Councillor Orhan confirm that a new up to date study will be carried out before any further decisions are taken?”

Reply from Councillor Orhan

“I can confirm we are discussing proposals for a partner school at Worcesters Primary School which would admit an additional reception class each year from 2012 to 2014. I can also confirm that an up to date traffic impact assessment is being commissioned in consultation with local residents.”

Question 14 from Councillor Stafford to Councillor Charalambous, Cabinet Member for Culture, Sport and Leisure

Can the Cabinet Member report on the library strategy?

Reply from Councillor Charalambous

“The public consultation on the future of the Library Service in Enfield closed on 2nd October 2011 and the Council received 1,583 responses to its online/hard copy questionnaire. The responses are still being analysed. I wish to put on record that we value the invaluable service to the community provided by libraries and would like to see libraries better equipped and providing a 21st century service for all and it is therefore my intention to propose that unlike many other London boroughs that we retain all our libraries and that there be no library closures.”

Question 15 from Councillor Maynard to Councillor Orhan the Cabinet Member for Children & Young People

“The Government has recently taken the decision to increase the pupil premium to £488, such that every child eligible for free school meals will receive an extra £58. Can Councillor Orhan inform us how many children in Enfield will benefit from this policy?”

Reply from Councillor Orhan

“13,126 children attending schools and academies in Enfield are eligible for free school meals (January 2011) and attract pupil premium payments.”

Question 16 from Councillor Brett to Councillor Stafford, Cabinet Member for Finance and Property

Can the Cabinet Member update the Council on Woodcroft Open Space?

Reply from Councillor Stafford

“Cabinet on 12 October 2011 approved a report to save Woodcroft, a unique urban nature reserve, and provide up to £100,000 of investment

into the site. Part of the site will be sold and some of the proceeds will be invested at the property for improvement works for the benefit of the entire community.

A management board will also be set up containing representatives of Woodcroft Wildspace and the Council to manage the site.

We are delighted that we've been able to protect the future of this popular and unique urban nature reserve for years to come. We've listened to the community, worked collaboratively with Woodcroft Wildspace Ltd and responded to the wishes of all in a way which enables us to provide a first rate wild space for the whole community while raising money to minimise the impact of government spending cuts and rising inflation on our Council Tax payers.

Proposals will minimise disruption to the wild space features already built, in particular the orchard and apiary, and encourage people from across the borough to make use of this fantastic facility.

Schools will also be invited to use the site as an educational facility, helping future generations to learn about nature conservation, biology and wildlife."

Question 17 from Councillor Maynard to Councillor Orhan the Cabinet Member for Children & Young People

"What preparatory work is the Council undertaking to ensure that it is ready to implement the new school admissions code?"

Reply from Councillor Orhan

"Colleagues at the DfE have recently indicated that it is their intention to publish the final Code during the first half of November. The final version was originally expected at the beginning of September. There has been no information, though, as to whether the final Code will differ from the consultation document. Colleagues are of the opinion, though, that there may be some changes to the final document.

As soon as the final version of the Code is published, officers will be working to identify if any changes need to be made to our current arrangement".

Question 18 from Councillor Stafford to Councillor Bond, Cabinet Member for Environment

What steps has the Council taken to reduce its carbon footprint in the last 6 months?

Reply from Councillor Bond

“Over the last 6 months the Council has recently formed a new Sustainability Service to drive further reductions in the Council's and Borough's energy bill and carbon footprint, with particular focus on leveraging in additional funding to complement the £300k of 'Invest to Save' Salix funding already being drawn down. To this end:

- We are proactively measuring, monitoring and managing the corporate portfolio using smart meters to actively drive further emission reductions. 148 of 179 smart meters have now been installed. As part of the final roll out, 10-15 of the more difficult installations took place during the last 6 months.
- The Carbon Reduction Commitment (CRC) is the first time we've truly measured the Council's carbon footprint, which will be nationally benchmarked through the CRC League Table. This baseline is due to be published imminently. Our performance will be rated against other participants and in particular the 32 other London Boroughs. It will be reviewed annually every July and published in the subsequent October. October 2012's league table will cover our performance in this current financial year. “

Question 19 from Councillor Rye to Councillor Orhan the Cabinet Member for Children & Young People

“The Labour party's new education spokesman, Stephen Twigg is an enthusiast for Free schools. Does Enfield's Cabinet Member share his passion or does she disagree with him?”

Reply from Councillor Orhan

“Yes I do share Mr Stephen Twiggs enthusiasim and passion for education and have found his comments that Michael Gove's approach is an outdated obsession with structures interesting, I do however, welcome his comments that 'Labour will put the classroom at the heart of our approach'.”

Question 20 from Councillor Keazor to Councillor Hamilton, Cabinet Member for Community Wellbeing and Public Health

“Will the Cabinet Member update on the position of the Residents Priority Fund?”

Reply from Councillor Hamilton

“As at the end of September 2011, the Enfield Residents Priority Fund Cabinet Sub-Committee had held three meetings, approving 50 projects with a total value of £555,839. 25 proposals with a value of just under £300,000 have been put forward to the October Cabinet Sub-Committee and proposals have already been received for the November meeting. Applications have been received or are being finalised for every ward in the Borough and a number of wards have fully committed their 2011/12 allocation.

All allocations are subject to a rigorous quality assurance process by Corporate Policy and Performance and Legal teams to ensure that they fully meet the eligibility criteria. Seven of the applications being considered at the October meeting were referred from the September meeting for clarification and further evidence of consultation etc.

A wide range of projects have been approved ranging from equipment for a playgroup, through neighbourhood environment days, skills training for employment and DJ sessions for young people to the provision of playground equipment, benches etc. Several projects have already started and more will begin in the next couple of months. We are confident that the full £2.1m 2011/12 allocation will be spent and that the projects will make a valuable contribution to improving the well-being of residents.”

Question 21 from Councillor Zetter to Councillor Orhan the Cabinet Member for Children & Young People

Does the cabinet member welcome the announcement that there will be a third free school in Enfield?

Reply from Councillor Orhan

“I have received the letter from the Department for Education informing me that the proposals to establish EN3 Primary School and the Kingfisher Hall Primary Academy had been fully assessed and are now proceeding to the next stage of the Free Schools process. The next stage is for the DfE to write to the Council to seek views on the proposals: I have not yet been informed of any details on the proposals.”

Question 22 from Councillor Charalambous to Councillor Goddard, Cabinet Member for Business and Regeneration

Can the Cabinet Member update the Council on Broomfield House?

Reply from Councillor Charalambous

“You will recall that the GLA promised £5.97m to restore Broomfield House and the stables yard and convert them to 18 homes for older

people complete with a café and community space on the ground floor of Broomfield House. The GLA granted us half a million pounds to commence the project. The present situation is that the Council has kept its part of the bargain and has completed detailed designs up to RIBA Stage D which would allow us to make a listed building consent and planning application. We have also carried out extensive public consultation which has shown strong public support for the proposals. However, as I have previously reported, we have had to stop work as the promised funding by the GLA has not come forward. We met the GLA and the Mayor of London's housing advisor on the 13 September and they confirmed that the Government had cut the budget to the GLA that it had identified for support of the Broomfield House project. The suggestion from the GLA and others that we reallocate the North London Sub Region s31 housing grant cannot be done as this money is fully committed against existing schemes. We have recently written to the Mayor's housing advisor confirming this, but also seeking support for a new bid against the Government's forthcoming Empty Homes grant allocation to the GLA. This will be investigated further as the criteria are published.

We have also been approached by the Heritage Lottery Fund and will meet them on the 7 November to gauge what level of support it can offer to bridge the heritage costs of the scheme. We are working on both housing and heritage fronts as there may be potential for a composite funding arrangement to work; housing grant from the GLA and heritage grant from the HLF. The third element of this composite approach is the contribution that a development partner would make. Consequently, we have decided to proceed with the competitive tendering of the scheme to find a suitable development partner - in this instance an RSL seems most likely - which will tell us how much money they will contribute, and therefore how much money we need in the form of housing and heritage grants.

We have met with local community groups and I'm pleased to say that they support our continued efforts to find a solution, despite the recent setbacks with the funding. We also continue to have strong support from English Heritage for the scheme and we have decided it would be timely to apply for planning permission and listed building consent, which, should they be obtained, will add certainty to the scheme and build confidence.

Further information has been placed on the Broomfield House website including the latest work of the Design Team. I will report further as the project progresses and a clearer picture emerges."

Question 23 from Councillor Kaye to Councillor Orhan, Cabinet Member for Children & Young People

"Would she inform the Council why she was unable to stay for the whole

morning at the Annual Governors Conference on Saturday 15th October to take questions at the panel session as many governors expected of her?

Since being appointed Cabinet member for Children and Young People, could she inform the council which Primary, Secondary, Special Schools and Colleges in Enfield has she visited and met with

- a. Students
- b. Staff
- c. Governors
- d. Parents"

Reply from Councillor Orhan

"I stayed for almost the entire length of the Annual Governors Conference; unfortunately I was unable to stay for the last half hour or so due to pressing surgery commitments. As Councillor Kaye knows, unlike the minority side, the labour party is committed to their surgeries. I make myself as available as possible to governors, many of whom take the opportunity to email me or phone me to discuss issues they have."

Question 24 from Councillor Brett to Councillor Hamilton, Cabinet Member for Community Wellbeing and Public Health

The following Safer Neighbourhoods Teams will now have to share a Sergeant:

Cockfosters **And** Southgate; Southgate Green **And** Bowes; Palmers Green **And** Winchmore Hill; Chase **And** Highlands; Grange **And** Bush Hill Park

Does the Cabinet Member think this will increase residents' feelings of security and lower crime?"

Reply from Councillor Hamilton

"The Council has lobbied against cuts in the Metropolitan Police and in particular against cuts in Enfield, where it is generally felt that we are under resourced currently.

We feel that if the Resource Allocation Formula were to be re-run today, we would benefit from additional officers.

Obviously there would be winners and losers in this process and it would appear that there will be little appetite to re-run the RAF on the run up to the London Mayoral Election.

Enfield Council has a strong working partnership with the local police and we continue to support additional officers (24 x PCSOs) who patrol our housing estates and park areas, however we are concerned about the potential abstraction of officers next year during the Olympic Games.

We are regularly checking the arrangements for the Borough during the Olympic period, as part of the wider business continuity arrangements for the area to ensure that the safety of our residents is not compromised.

We will however continue to lobby for additional officers on behalf of local residents through all available channels, including the London Crime Reduction Board and London Councils.

Due to the public support for police following the disorder in the summer, the Mayor of London appears to be making more promises about ensuring robust policing in the capital. We will do everything we can to make certain that we are not net losers of police officers in favour of more wealthy, less needy boroughs."

Question 25 from Councillor Rye to Councillor Orhan, Cabinet Member for Children & Young People

"How much was spent on Youth Services by Enfield Council in April 2002 and how did this compare with all other local authorities and how much was spent on youth services 2010 and how did this compare with all other local authorities?"

Reply from Councillor Orhan

"In 2002/03 Enfield spent £3,565 per 1000 population on Youth Work. The average for Outer London Boroughs was £6,182 per 1000 population. Enfield was in the lower quartile of the 20 Boroughs. The latest figures available for 2010/11 across all OLB's is the 2010/11 Estimates. This shows that Enfield now spends £12,703 per 1000 pop. The OLB average is £13,432 per 1000 pop and Enfield is now in the top half of OLB's.

Please note the above figures exclude expenditure on Connexions and Careers which were transferred to LA responsibility in 2008 & 2009."

Question 26 from Councillor Simbodyal to Councillor Orhan, Cabinet Member for Children and Young People

"Can the Cabinet Member tell this Council what took place across schools in Enfield on 14th October 2011 which culminated in an Enfield schools wide election? Can the Cabinet Member tell this Council how many hits the Facebook site received; how many young people took part; and how many votes were cast?"

Reply from Councillor Orhan

- “Enfield Youth Parliament elections took place between 3rd and 13th October 2011.
- The elections were an enormous success with 28 candidates standing for election in the four constituency areas
- Over 9,000 young people turned out to vote (63% turn out). Highlands school recorded an incredible 96.5% turnout.
- Each candidate produced a manifesto, a You-Tube video and did their own canvassing and promotion in schools and the local area. The EnfieldYParliament Channel has recorded over 6,800 downloads of the young people’s manifesto videos. In addition to this young people have been regularly visiting the Enfield Youth Parliament Facebook page.
- Ballot boxes were available at 17 locations including:
 - Cheviots Centre,
 - Two Connexions Centres,
 - College of Haringey, Enfield and North East London.
 - Chace Community, St.Ignatius, Southgate, Highlands, Lea Valley High School, Broomfield, Winchmore, Edmonton County (upper and lower), Enfield County (upper and lower) and Oasis Hadley Academy.
- The election period concluded with an Elections Results Night which took place on Friday 14th October at the Dugdale Centre in Enfield Town.
- 16 Youth Parliament Members have been elected; in addition 4 seats are available for nominated or elected posts from the Joint Service for Disabled Children, Youth Offending Service, Children in Care Council and the Youth Engagement Panel.”

Question 27 from Councillor Lavender to Councillor Stafford, Cabinet Member for Finance and Property

It seems somewhat odd that at a time when charges are being raised, financial support is being cut and services are being either frozen or reduced, that the council has introduced, through the residents priority fund, a time and resource consuming process to dream up ways of giving money away, quite frequently to interests which have never asked for it in the first place.

Given the inevitable budget pressures which the council faces, will the administration consider including in the budget consultation the

suggestion that the resident's priority fund be cancelled?

Reply from Councillor Stafford

"I thank Councillor Lavender for his concern about the funding cuts from Central Government. But despite these cuts, I can reassure Councillor Lavender that we look at all options in the budget round and this Council is both prudent and imaginative in its approach to protecting the frontline services that so many of our residents rely on and funding their priorities.

The Enfield Residents Priority Fund is just such an innovative scheme designed to give residents the opportunity to work with their Ward Councillors in developing projects that promote social, economic and environmental wellbeing and tackle deprivation in their neighbourhoods. For this very reason the priority fund has been allocated across wards using the Index of Multiple Deprivation.

A measure of this initiative's success is the fact that proposals have now been drawn up by residents in every ward to bid for funds from this scheme. Indeed a number of wards across the Borough have already allocated all their funds for 2011/12.

Playground equipment, an outdoor gym, the development of urban wasteland as a picnic area and activities for children and young people are just a few of the 50 schemes which have been approved.

Enfield Council, like so many others is facing significant financial pressures as a result of reductions in Government expenditure, the impact of inflation and other pressures. Despite this, the Council believes that devolving some decision making to residents and empowering them to improve their own quality of life will have tremendous benefits for both residents and the Borough for years to come."

Question 28 from Councillor Hasan to Councillor Orhan, Cabinet Member for Children and Young People

"Can the Cabinet Member tell this Council the manifesto pledges her department has delivered?"

Reply from Councillor Orhan

"Detached Youth Workers

We have increased the establishment of Detached Youth Work, such that we now have a full time Detached Youth Worker and are currently recruiting to six additional part-time Detached Youth Workers in order to provide a more flexible response to the needs of young people in the Borough.

Youth Achievement Foundation

There are currently discussions taking part between the Children's Scrutiny Panel and officers on identifying the best way to approach this.

Allotments for Schools

A number of discussions have taken place between schools, our department and Environment. As a result of this, Education has made funds available to schools to enable growing projects as a one off allocation. 25 schools have joined a London-wide scheme Capital Growth which allocates grants for growing spaces with their target being 2012 new growing spaces by 2012.

Uniform Grants

Uniform grants are now issued for children applying for reception places and transferring between primary and secondary school. The families have to be in receipt of one of the following: Income Support, Income Support Jobseekers Allowance, Employment and Support Allowance (IR) or assistance as an Asylum Seeker. Families also qualify if they receive Child Tax Credit only and have an income of less than £16,190, or receive the guaranteed element of State Pension Credit. Families have to live in the London Borough of Enfield and the child must be attending a state maintained school.

For the 2011/2012 academic year the grant is £22 for a reception pupil and £85 for a year 7 pupil.

Free School Meals Pilot

- The development of a one-school pilot was a commitment in the labour manifesto for the Council elections in 2010
- There is a pilot scheme at Eastfield Primary Schools which will operate for two years offering free lunches to all children at the school.
- Eastfield was selected on the basis of data analysis taking into account information about deprivation, information about obesity levels and information about the level of take up of paid meals
- The results of the pilot will be analysed at the end of the period including the impact on obesity, eating habits and behaviour as well as the costs."

Question 29 from Councillor Lavender to Councillor Stafford, Cabinet Member for Finance and Property

Will Councillor Stafford confirm the amount, if any, of salary costs which have been capitalised since May 2010.

Reply from Councillor Stafford

“In the 2010/11 accounts £3.77m of General Fund salary costs were capitalised. This sum relates mainly to property, highways, parks, asset management and architectural services.

A further £1.98m was charged to the Housing Revenue Account in 10/11.

In total £5.75m of salary costs were capitalised.”

Question 30 from Councillor Cole to Councillor Orhan, Cabinet Member for Children and Young People

“Can the Cabinet Member tell this Council just some of the activities and ways her department has been working hard at to raise the excellence of children and young people in Enfield?”

Reply from Councillor Orhan

“Everything that my department does is focussed on raising standards and narrowing achievement gaps for Enfield Children and young people.

I am justly proud of the extent, range and evidenced impact of these activities in spite of the huge numbers of cuts imposed in the last year

An example of just a few activities would be,

Providing and quality assuring a wide range of training and development activities for all school staff, governors and the wider children’s workforce. Much of which is nationally recognised and has received awards. This would also include support and development for parents and our most needy families.

Continued and ongoing financial advice for our schools and centres so that they can demonstrate value for money and prioritise resources for the most in needs

Rapid and effective response to schools that are judged to be causing concern. This would include

- developing and brokering structural arrangements between outstanding schools and those facing difficulties
- excellent and widely respected advice and support from schools HR
- a focus on improving outcomes for local vulnerable children

Offering support and advice for all children and young people and their families, from those who are underperforming and most needy to those who are the most able, so that they continue to achieve to their potential.”

Question 31 from Councillor Lavender to Councillor Stafford, Cabinet Member for Finance and Property

“Will Councillor Stafford confirm the amount to the nearest £ that has been given to businesses by way of business rate relief following the much advertised initiative that he introduced last year.”

Reply from Councillor Stafford

“The Pilot Business Rates Hardship Relief scheme for businesses in Edmonton Green Ward was approved at Cabinet in March 2011 and implemented following call-in to Overview and Scrutiny Committee in April 2011. 122 small businesses in Edmonton Green Ward were sent details of the scheme and how to apply and to date 10 applications have been received for Rate Relief totalling £45,919.25. The applications are being assessed and verified and any further information requested if required. Awards are expected to be made over the coming month and the scheme will be evaluated after one year's operation.”

Question 32 from Councillor Lemonides to Councillor McGowan, Cabinet Member for Adult Services and Care

“Can the Cabinet Member explain what effects the NHS Enfield's proposed funding cuts of £750,000 to the voluntary sector will have on the services they deliver to the elderly in Enfield.”

Reply from Councillor McGowan

“I am grateful to Councillor Lemonides for raising this question and I note the emphasis on services for older people. However the proposed funding cuts span a range of service areas including older people, mental health and services for people with learning difficulties, and young carers.

Having said that, I am deeply disappointed that such unilateral action should have been taken by NHS Enfield, particularly in light of the approach which the Council had taken with its health partner to review the effectiveness and affordability of services provided by the voluntary and community sector in Enfield.

As Cabinet Members, both myself and Councillor Hamilton have met with Sarah Thompson, the NHS Enfield Borough Director, to express our concern about these proposed cuts in funding. The financial context within which this action is being taken is well understood and subsequent to the notice of the proposed funding cuts, was reported to Health Scrutiny Panel on 6th October 2011. However, the point has been made that targeting the voluntary and community sector in this way, appears to miss the bigger picture where there is overspend on the acute sector because of

lack of primary care provision in Enfield.

Correspondence between the Borough Director of NHS Enfield and the voluntary organisations which are funded by NHS Enfield, has made clear that the services which they are funding will be separately reviewed within the period of notice of termination of funding. Members will know that six months notice has been given to these organisations within the voluntary and community sector in Enfield. Officers are currently assessing the impact which the cuts in funding which have been proposed by NHS Enfield will have, particularly for organisations that are jointly funded, if and when these cuts take place.

The detailed impact will therefore only be known once meetings have been held by NHS Enfield with each of the organisations affected. Clearly the significant element of the review of services will be whether services provided are actually eligible for health funding. The risk for the Council is that withdrawal of health funding may impact on a potential future demand for social care services.

We will continue to encourage NHS Enfield to protect funding for these essential services and not to take any unilateral decisions without full dialogue with the council and other local stakeholders.

Some of these health funded services are also funded by the Council and careful account will need to be taken of the viability of the Council's investment in these jointly funded services at the stage that any funding is withdrawn by NHS Enfield.

It needs to be clear that it is NHS Enfield's decision about withdrawal of funding acting under an expectation from NHS North Central London to cut expenditure."

Question 33 from Councillor Lavender to Councillor Stafford, Cabinet Member for Finance and Property

Is the Finance Department monitoring any reduction in the yield from service charges arising from the increase in various charges introduced as part of last year's budget? Are there any instances where, as a result of the increase in any charge, the overall yield has reduced?

Reply from Councillor Stafford

"Income monitoring forms part of the monthly budget monitoring process. Income projections are made by service managers by taking into account actual income to date, seasonal trends, market/industry conditions and for some income streams, the consumers' behaviours and their confidence on economic recovery. These are reviewed and challenged where

appropriate by Finance on a regular basis. Any significant variances on income budgets are included in the budget monitoring reports to CMB and Cabinet.

Fees and charges are set on a cost recovery basis. The increase in the 11/12 charges is required to reflect the uplift in the costs of materials and providing the services through external contractors.

The table below sets out fee increases and yields in comparison to 2010:"

	2011/12 % fee increase	2011 No. of requests / applications / tickets	2010 No. of requests / tickets	% change	2011 Income	2010 Income	% change
Skip licenses	2.17%	2,367	2,316	2%	£91,655	£88,534	4%
Bulky Waste	Removal of 1st free collection	1,737	130 (chargeable requests only)		£44,041	£4,100	974%
P&D parking	approx 50%	351,652	429,005	-18%	£659,785	£573,318	15%
Burials (Apr-Jun only)	average 45%	79	92	-14%	£287,614	£225,982	27%

Question 34 from Councillor East to Councillor Bond, Cabinet Member for Environment

Would Councillor Bond please confirm what plans have been agreed for the introduction of a Wildlife Officer, which was one of the commitments that the majority group made prior to the May 2010 elections?

Reply from Councillor Bond

"There was no direct commitment in the Manifesto for such a post.

Though I am glad to see Councillor East is improving his reading material.

However, the introduction of a Bio-Diversity Officer will allow for the commitment of the wildlife officer to be met. It will be the role of this officer to ensure that the Bio Diversity Action Plan is completed. An integral part of this plan is to ensure that the preservation and integration of wildlife and wildlife habitat is maintained and enhanced across the Borough. This will be via a range of mechanisms including the Planning regime as well as any developments to services."

Question 35 from Councillor Lamprecht to Councillor Bond, Cabinet

Member for Environment

What plans does the Council have to apply to Transport for London (TfL) for funding a programme of work to shorten the excessively long bus stop clearways at those bus stops where bendy buses will not be used after the end of this calendar year?

Reply from Councillor Bond

“The Council is already using a portion of its current TfL funding allocation to investigate improvements to many bus stops across the borough. As part of this ongoing work the Council will consider amending the few bus stops that were extended to accommodate the bendy buses. This would of course be subject to consultation with premises adjacent to the bus stops, and with London Buses.

Maybe Councillor Lamprecht should ask the Mayor of London for extra funding for this work to happen as I am informed they are in the same political party.”

Question 36 from Councillor Chamberlain to Councillor Taylor, Leader of the Council

Does Councillor Taylor agree that it is his duty and that of his fellow Cabinet members to actually answer the council questions placed before them? One clear example of this failure at the last council regarding information requested in questions, was Councillor Taylor’s answer to question 13, which failed to provide the cost and on-going costs asked for in this short, simple to understand question. Furthermore will Councillor Taylor provide that answer now?

Reply from Councillor Taylor

“Following the riots there were costs in respect of additional security at 5 buildings totalling £33,086. There has been a review of CCTV which has been contained within existing resources.

In addition, there have been repair costs to Council premises through damaged brickwork and broken windows totalling £1,500 and repairs to highways and street lighting in Little Park Ridings and Solar Way totalling £8,699.

These costs will be included in a claim to the Government in respect of the £10m Recovery Fund available to affected local authorities.”

Question 37 from Councillor Chamberlain to Councillor Bond, Cabinet Member for Environment

I note that Councillor Bond has enjoyed considerable publicity regarding his ban on spitting proposal; however his oratory does not appear to be being backed up with much effort, given that the online petition he is running has only 130 signatures as of 16 October 2011. Spitting is a disgusting activity, so I would ask the cabinet member to set out what actions he intends to take now to get the two and half thousand signatures still needed

I might also add, as he has not done so, he could start this process by circulating the petition to all Councillors and council staff whom he might consider asking for support if he is seeking to take this forward.

Reply from Councillor Bond

"I congratulate Councillor Chamberlain on his viewing habits and his reading material and I'm glad that he's following me as he used to when he was in Southbury ward.

The spitting campaign was started by residents in Enfield and is resident lead, therefore, not knowing where he got his figures from but they were certainly out of date as of 16th October 2011.

Signatures are being collected not just on the Enfield Website but also by shop keepers, church groups, residents groups, schools and libraries from all areas of the borough representing the diversity we enjoy in Enfield.

I apologise to Councillor Chamberlain that he has not received a copy of the petition but I was advised over a week ago that all Members of the Council would receive copies of the petition in their post, I have, therefore, today 27th October 2011, instructed officers to circulate the petition and to make sure this petition has cross party support which has always been my aim."

Question 38 from Councillor Chamberlain to Councillor Oyken, Cabinet Member for Housing

Most tenants are decent law abiding citizens who have their quality of life damaged by an amoral minority, so it is important that action is taken against that minority. At last Council Councillor Oyken's answer to question 41 gave assurances that firm action will be taken against tenants involved in the violent disturbances. Will the Cabinet Member now confirm if any action has actually been taken against tenants linked to the disturbances, and if so what was the type of action taken?

Reply from Councillor Oyken

“A National Independent Riots, Communities and Victims Panel has been set up to examine and understand why the riots took place in August 2011. The investigation will involve a series of public meetings to obtain the views of residents across London who were directly affected by the riots. Together with Enfield Council Commission, a public meeting has been organised for 2nd November to give people in Enfield a chance to contribute to the national investigation.

Enfield Council is working with the Police and partners agencies to identify people involved in the August Disturbances in Enfield with a view to taking criminal proceedings for offences committed. Investigations are continuing and to date no tenants of Enfield Council have been arrested or detained following the riots.

Enfield’s ALMO has a strong focus on preventing anti social behaviour (SSB). It has a clear and well communicated ASB policy which has been developed with tenants and is delivered through partnership working with the Police and ASB Teams. This Policy meets the requirements of the RESPECT – ASB Charter for Housing. Strong tenancy management is in place and remedies including service of formal Notices, extension of Introductory Tenancies, injunctions and demotion of tenancies have been successful in bringing about changes in behaviour. Possession action is taken only as a very last resort. Enfield’s ALMO approach to dealing with ASB is to support tenancies and not evict except in the case of the most persistent perpetrators who are not responsive to the support offered. Enfield’s ALMO will always consider the proportionality of a perpetrator’s behaviour and the impact of their ASB on the wider community.

The Government is currently consulting on a new mandatory power of possession for anti social behaviour. If introduced, Enfield’s ALMO will consider using the new power within the context of a wider tool kit focusing on preventing ASB. The power would be built into the ASB Policy of Enfield’s ALMO and used as a very last resort.

Enfield Homes and Council have agreed that possession action will commence against any Secure or introductory tenant found guilty of any offence arising from the recent disturbances. Discussions have been held with Legal Services to ensure any possession actions are progressed speedily. There have been no reports to date from any agency that any of our tenants were arrested or detained.”

Question 39 from Councillor Headley to Councillor Stafford, Cabinet Member for Finance and Property

“What steps is the council taking to ensure equal access to business lets in the borough?”

Reply from Councillor Stafford

“This Council owns a portfolio of properties which are held for investment purposes. These include retail, industrial and agricultural properties. With the exception of the Managed Workspace units, which are let on an "easy in/ easy out basis", only a very small percentage (less than 1% a year) become available to re-let. In order to enable equal access to these:-

1. They are advertised on the Council's Website, our contractors' websites (in the case of the retail and agricultural properties) and the North London Business Website.
2. Telephone enquiries to the Council's Customer Services helpline are passed to our Property Team, who provide information on the availability, user requirements and rents relating to these properties.
3. Our contractors maintain a register of applications relating to our retail and agricultural premises. Enquirers are contacted if a suitable Council property becomes available.
4. "To Let" boards are fixed to vacant retail units which are available to let and similar signs are displayed in windows of available units, such as those at Claverings Industrial Estate.
5. Site visits are arranged to suit the applicants.
6. Advertisements are placed in appropriate journals, where relevant.
7. The new tenants are chosen having regard to their proposed use of the property and their financial viability to take on the lease.”

Question 40 from Councillor Lamprecht to Councillor Stafford, Cabinet Member for Finance and Property

“What monitoring process does the council have in place to ensure that unauthorised sub-lets of council owned business properties are not taking place?”

Reply from Councillor Stafford

“As explained in my previous answer to Councillor Headley, this Council owns a portfolio of properties which are held for investment purposes. The management of these properties includes:-

1. Regular site visits and communications with our tenants. These, together with our officers' or contractors' knowledge of the area,

enables changes in, for example, the business name or use of the property to be identified in many cases, which may have resulted from an unauthorised subletting.

2. Monthly monitoring of invoices and payments may identify a change in the occupier's name, which may indicate an unauthorised subletting.
3. Site visits relating to Rent Reviews, Lease Renewals and requests for consents for alterations and assignment also enable the Council to check who is occupying the property.

If officers become aware that unauthorised subletting has taken place, the appropriate action is taken against the original tenant and subtenant by officers in Legal Services, Property and Finance.”

Question 41 from Councillor Chamberlain to Councillor Taylor, Leader of the Council

We note with concern Councillor Taylor’s answer to council question No. 2 at last full Council which contained the implicit threat to curtail a Councillor’s right to publicly ask questions and have them published in the Council papers. Given that questions answered in public or private cannot in reality require significantly different effort, yet some public questions are regarded by him as an abuse, can he set out what type of questions he considers to be an abuse and for what reason? Is he, for example, seeking to disbar any reference to published information, especially where it might be seeking to determine if any changes to announced plans have happened? Or will he recant this inherently anti-democratic position and admit that he got it wrong

Reply from Councillor Taylor

“Is ‘we’ a royal ‘we’ or is this a Group position of the Conservatives?”

As you will know, all questions are drafted as a reply by officers for Members to consider. This has to be concluded in a relatively short period of time by officers, and this collating of information requests disturbs normal work, and obviously costs the Council taxpayer. While Members enquiries are dealt with within 10 working days, the Council meeting timescale creates a much tighter deadline. No one should seek to prevent legitimate enquiry and scrutiny, but I would ask the Councillor to reflect on whether all questions posed over the past 16 months have always met this objective.”

Question 42 from Councillor Laban to Councillor Oyken, Cabinet Member for Housing

Please would the Cabinet Member update me on the future of the vacant blocks on Parsonage Lane, St Georges Road, Forty Hill and Lavender Hill?

Reply from Councillor Oykener

“Small Housing Sites Update

On 14 September a report was taken to Cabinet regarding the following small housing sites:

Sheltered Blocks

- 1) 9-85 Parsonage Lane
- 2) 22-68 Forty Hill
- 3) 119-135 Lavender Hill
- 4) 50-60 St George’s Road
- 5) 41-63 Tudor Crescent
- 6) 1-18 Jasper Close

Hostels

- 7) Cornerways
- 8) Oakthorpe Court
- 9) 196-198 Green Lanes
- 10) 23 Church Street

The recommendations were for sites 5-6 to be demolished, for the four hostel sites (7-10) to be disposed off and for an options appraisal to be undertaken on sites 1-6. Prior to starting the options appraisal the Council is consulting local residents on what they would like to happen. To date two consultation meetings have been held and over the two meetings approximately 150 residents have attended.

The Council is aiming to appoint a demolition contractor by early 2012. The demolition contractor will price not just sites 5-6 but the demolition of sites 1-6 meaning that if the outcome of the options appraisal is for one or more of sites 1-4 to be demolished then the demolition contractor can take on the demolition of these sites as well as 5-6.

The options appraisal is also due to be completed by early 2012. The two main objectives are to deliver new housing, particularly family sized affordable housing, and to deliver a capital receipt that can be reinvested into delivering new housing. A report will be taken back to Cabinet in April 2012 recommending a preferred option for each site.”

Question 43 from Councillor Laban to Councillor Bond, Cabinet Member for Environment

Please would the Cabinet Member inform me what action he has taken to get the Primary Care Trust to remove the fly tip waste in the derelict building next door to Moorfield Health Centre, Moorfield Road in his ward?

Reply from Councillor Bond

“I am very pleased to see that Councillor Laban take such a keen interest in the environment around where she lives and I look forward to her taking these new found interests into the ward she represents.

In relation to the fly tipping on the land associated with Moorefield family centre the Environment Department has been having some difficulty serving a notice on the correct partner as there have been changes within the NHS recently.

Previous formal enforcement action was taken through serving of formal notices requiring clearance of litter and to prevent further litter accumulations under the Environmental Protection Act 1990. Subsequent to service of the Notice, land was cleared and no further action was taken by the Council. However, further reports have been actioned informally by the Enforcement team.

Further to concerns about the location and its visual impact on the area Envirocrime have contacted the PCT and the new Estate Manager has now been made aware of the issue and he has advised that he has instructed contractors to carry out works as soon as possible.

However, the Council will serve a boarding up notice on 27 October 2011 providing a minimum of 48 hours to make safe and secure the land under the Local Government (Miscellaneous Provisions) Act 1982.

The location will be revisited on Tuesday 1 November and a final assessment will be made when we will contact the PCT and compliance of that notice will be met that week either through works by the landowner or through works in default by ourselves.”

Question 44 from Councillor Laban to Councillor Goddard, Cabinet Member for Business and Regeneration

Do you agree that proposals from the Environment Department to remove free parking on Sundays will kill off the shopping facilities at Enfield Town when they are at their most vulnerable because of the disturbances and current economic situation?

Reply from Councillor Goddard

“We are fully aware of the impact of the disturbances on the town centre businesses, and, as you know, we have put in place a range of measures to support our businesses through this difficult time. This will keep the matter under constant review through a group that has been established to support the retail sector.

In addition, we have recently commissioned EBRA to mount a major marketing campaign with the express purpose of attracting additional customers to our town centres.

Having considered the matter carefully we believe that the introduction of Sunday Parking Charges in Enfield Town will not adversely affect the shopping facilities.

We have discussed with shops innovative ideas around how they can mitigate the small increase in charges for Sunday as well and this dialogue continues on how to improve the shopping experience in Enfield Town.

Since we have agreed, after consultation with shopkeepers and local Churches to introduce these charges, other nearby Boroughs have increased their car parking charges well above Enfield.”

Question 45 from Councillor Laban to Councillor McGowan, Cabinet Member for Adult Services & Care

Please could the Cabinet member give me an update on what is happening with regards to the former Elizabeth House and Pitfield Way site?

Reply from Councillor McGowan

“Elizabeth House site has been demolished. Once the electricity cable is disconnected and work is safe to continue then below ground slabs will be removed with the target date for completion being 14th of November 2011.

The Council is currently going through a procurement exercise to commission and procure a care home service that offers nursing, residential, respite and continuing care services to older people who can no longer live at home. The service will specialise in providing dementia and challenging behaviour care. We have been regularly engaging with residents, family and stakeholders throughout the planning stage and will continue to do so through to project delivery. We are on target to complete the procurement process by December 2011 with a view to seeking approval from Cabinet to award the contract in January 2012.

The 0.46 acre Pitfield Way site is cleared and vacant. It is protected by a hoarding to Hertford Rd and Haris fencing to the other sides. It is currently being marketed for sale by Jones Lang LaSalle. Offers are being invited on an unconditional and subject to planning basis. It is a condition of the sale that any development of the site does not have a negative effect on the reprovision of Elizabeth House.”

Question 46 from Councillor Neville to Councillor Bond Cabinet Member for Environment

In your reply to Question 17 at the last council, you indicated that the consultation costs of reviewing the Enfield Town CPZ has been funded from “Section 106 contributions assigned to the reviews of CPZs”. Would you let the council know which Section 106 agreements have been used for this purpose?

Reply from Councillor Bond

“Contributions from the following s106 agreements have been used to fund the review of the Enfield Town CPZ:

- Redevelopment of the former petrol filling station at 97-101 Southbury Road;
- Redevelopment of the former car park in Florence Avenue; and
- Redevelopment of 18 Ladysmith Road.

Although Councillor Neville has not asked, the amounts available from each of the agreements are £39.4k, £19.7k and £3.0k respectively.”

Question 47 from Councillor Neville to Councillor Bond Cabinet Member for Environment

Would he tell the council what steps he has taken to implement the Local Authority Business Recycling and Waste Collection Commitment, and how it will impact on business in the borough?

Reply from Councillor Bond

“The council supports this new scheme in principle. Officers have just been made aware of the commitment and are working through it in detail to ensure that the Council can commit fully to the 12 principles before recommending it for full adoption. This will be sent for approval along with the household waste commitment at the same time.”

Question 48 from Councillor Neville to Councillor Bond, Cabinet Member for Environment and Councillor Oyken, Cabinet Member

for Housing

Is it not time to consider transferring the enforcement of Housing Legislation in respect of houses in multiple occupation or housing otherwise in disrepair to the Environment Department, so that there can be an effective enforcement regime against rogue landlords?

Reply from Councillor Bond and Councillor Oyken

“The Housing Enforcement Team has an excellent track record of dealing with rogue landlords. The team have recruited skilled Environmental Health Officers and Surveyors to take robust enforcement action against landlords who fail to meet their duties and responsibilities with regards to disrepair and HMOs. Last year the team dealt with nearly 1000 enquiries regarding housing related disrepair and HMOs. Most cases of disrepair are resolved through negotiation with the landlord. However, where appropriate the team have taken robust enforcement action such as the serving legal notices, undertaking works in default, incurring charges and/or prosecution.

However, robust enforcement action is only one aspect of ensuring a high quality and vibrant private sector and tackling rogue landlords. Housing disrepair very rarely happens in isolation. Situating the Housing Enforcement Team within Community Housing Services offers a number of significant advantages both strategically and operationally. The enforcement team liaise very closely with their colleagues in housing on a daily basis in order to tackle contributory factors in a coordinated and comprehensive way. They need to work closely with their colleagues in Housing Advice and Options to tackle relationship breakdowns between landlords and tenants, notices seeking possession, rent arrears, housing benefit problems, homelessness, prevention of homelessness and rehousing etc. They need to liaise closely with the Tenancy Relations Officer where complaints of disrepair and the service of notices lead to harassment and threats of illegal eviction.

Most landlords in Enfield aspire to be responsible and professional. In order to facilitate high quality homes and tenancy management and tackle rogue landlords we need to have both a carrot and stick approach. Community Housing Services run an Accredited Landlord Scheme that aims to reach out to all local landlords, even inexperienced and new buy to let landlords, in order to get them to sign up to the minimal standards of property management that the scheme requires. In return for this, landlords receive an accreditation mark and we provide advice and assistance on matters such as Housing Benefit.

Community Housing Services also do business with most local landlords on a daily basis. We lease accommodation and procure Homefinder

Scheme properties through offering deposits and deposit bonds. Where landlords fail to provide the standards of properties that we expect, we can put further pressure on them by making the decision not to do any further business with them until standards improve. Community Housing Services can offer grants to Homeowners in order to bring their properties up to a decent standard and can offer incentive for owners of empty homes to bring them up to standard and then rent them out to those in housing need.

Private Sector Housing has recently developed a new Charging Policy to charge landlords for notices served and for organising works in default. We have recently met with Environmental Services in order to achieve closer joint working through the “Operation ECO” project that aims to target small areas of Enfield that have reputation for poor street scene. Recently we have successfully bid for a housing related grant in order to tackle the problem of other boroughs placing their homeless families in Enfield in poor quality and unsustainable private rented accommodation – we aim to visit these households in order to ensure that these properties reach a minimal standard and the tenancy is sustainable. With the introduction of LHA caps and reduced Housing Benefit payments, this trend is likely to get worse and a coordinated and comprehensive private sector housing approach to these problems will become more important.

The above approach to dealing with rogue landlords has proved effective in Enfield. The most recent data suggests that Enfield council has a lower % of private sector non Decent Homes and a lower percentage of private homes with Cat 1 hazards than the national average, despite having top quartile levels of deprivation in England.”